

solos

||: A⁷ D⁷ | G⁷ C⁷ | A⁷ D⁷ | G⁷ B^{b7}

A⁷ D⁷ | G⁷ E⁷ | A⁷ D⁷ | G⁷ E⁷

A⁷ D⁷ | G⁷ F^{#7(-5)} | A⁷ D⁷ | G⁷ E⁷⁽⁻⁵⁾

A⁷ D⁷ | G⁷ E⁷ | A⁷ D⁷ | G⁷ B⁷⁺

C⁷ B^{b7} | A⁷ D^{7sus4} | G⁷ F⁷ | E⁷ E^{b7+} D⁷ D^{b7(-5)}

C⁷ B^{b7} | A⁷ D^{7sus4} | G⁷ E⁷ | A⁷ A^{b13(+11)}

A⁷ D⁷ | G⁷ C^{#7(#9)} | A⁷ D⁷ | G⁷ E^{b7}

A⁷ D⁷ | G⁷ E⁷ | A⁷ D⁷ | G⁷ A^{b7} G⁷ / :||

DC al fine

♩ = 80

Tenor (in place of Alto)

FUDGE

Swing
Paul Busby
PRS

A

First staff of music for section A, starting with a treble clef and a 4/4 time signature. It begins with a quarter rest followed by a quarter note G4, then eighth notes A4, B4, C5, and D5. The second measure contains a quarter rest followed by a quarter note B4, an eighth note A4, and a dotted quarter note G4. The third measure starts with a quarter note G4, followed by eighth notes A4, B4, and C5. The fourth measure begins with a quarter rest, then a quarter note B4, an eighth note A4, and a dotted quarter note G4. The staff concludes with a quarter note G4, an eighth note A4, and a dotted quarter note G4.

Second staff of music for section A, continuing from the first. It starts with a quarter note G4, followed by eighth notes A4, B4, and C5. The second measure has a quarter rest, then a quarter note B4, an eighth note A4, and a dotted quarter note G4. The third measure begins with a quarter note G4, followed by eighth notes A4, B4, and C5. The fourth measure starts with a quarter rest, then a quarter note B4, an eighth note A4, and a dotted quarter note G4. The staff ends with a quarter note G4, an eighth note A4, and a dotted quarter note G4.

B

First staff of music for section B, starting with a treble clef and a 4/4 time signature. It begins with a quarter note G4, followed by eighth notes A4, B4, and C5. The second measure has a quarter rest, then a quarter note B4, an eighth note A4, and a dotted quarter note G4. The third measure starts with a quarter note G4, followed by eighth notes A4, B4, and C5. The fourth measure begins with a quarter rest, then a quarter note B4, an eighth note A4, and a dotted quarter note G4. The staff concludes with a quarter note G4, an eighth note A4, and a dotted quarter note G4.

Second staff of music for section B, continuing from the first. It starts with a quarter note G4, followed by eighth notes A4, B4, and C5. The second measure has a quarter rest, then a quarter note B4, an eighth note A4, and a dotted quarter note G4. The third measure begins with a quarter note G4, followed by eighth notes A4, B4, and C5. The fourth measure starts with a quarter rest, then a quarter note B4, an eighth note A4, and a dotted quarter note G4. The staff ends with a quarter note G4, an eighth note A4, and a dotted quarter note G4.

C

First staff of music for section C, starting with a treble clef and a 4/4 time signature. It begins with a quarter note G4, followed by eighth notes A4, B4, and C5. The second measure has a quarter rest, then a quarter note B4, an eighth note A4, and a dotted quarter note G4. The third measure starts with a quarter note G4, followed by eighth notes A4, B4, and C5. The fourth measure begins with a quarter rest, then a quarter note B4, an eighth note A4, and a dotted quarter note G4. The staff concludes with a quarter note G4, an eighth note A4, and a dotted quarter note G4.

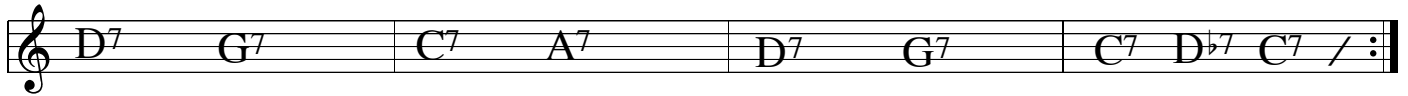
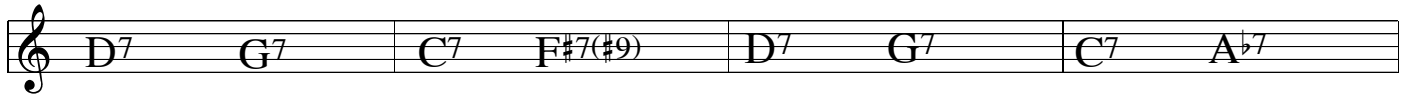
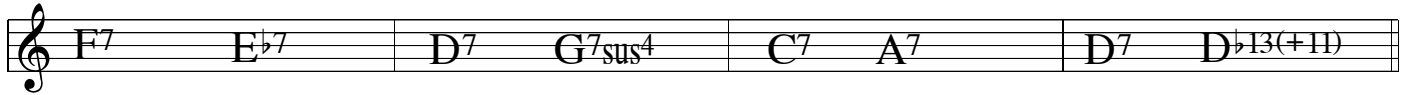
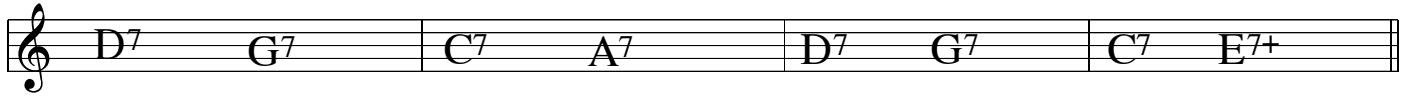
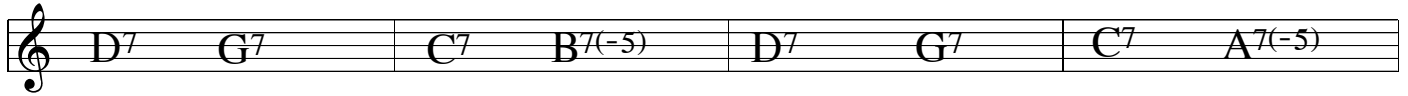
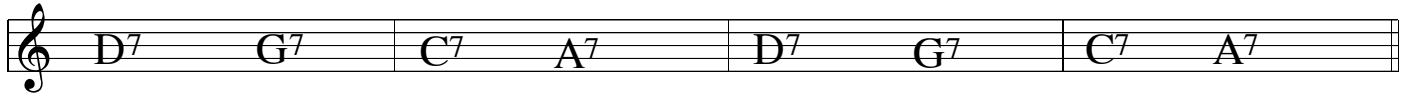
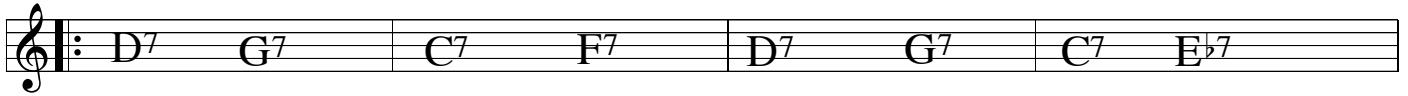
Second staff of music for section C, continuing from the first. It starts with a quarter note G4, followed by eighth notes A4, B4, and C5. The second measure has a quarter rest, then a quarter note B4, an eighth note A4, and a dotted quarter note G4. The third measure begins with a quarter note G4, followed by eighth notes A4, B4, and C5. The fourth measure starts with a quarter rest, then a quarter note B4, an eighth note A4, and a dotted quarter note G4. The staff ends with a quarter note G4, an eighth note A4, and a dotted quarter note G4.

D

First staff of music for section D, starting with a treble clef and a 4/4 time signature. It begins with a quarter note G4, followed by eighth notes A4, B4, and C5. The second measure has a quarter rest, then a quarter note B4, an eighth note A4, and a dotted quarter note G4. The third measure starts with a quarter note G4, followed by eighth notes A4, B4, and C5. The fourth measure begins with a quarter rest, then a quarter note B4, an eighth note A4, and a dotted quarter note G4. The staff concludes with a quarter note G4, an eighth note A4, and a dotted quarter note G4.

Second staff of music for section D, continuing from the first. It starts with a quarter note G4, followed by eighth notes A4, B4, and C5. The second measure has a quarter rest, then a quarter note B4, an eighth note A4, and a dotted quarter note G4. The third measure begins with a quarter note G4, followed by eighth notes A4, B4, and C5. The fourth measure starts with a quarter rest, then a quarter note B4, an eighth note A4, and a dotted quarter note G4. The staff ends with a quarter note G4, an eighth note A4, and a dotted quarter note G4, followed by the word *fine*.

solos



DC al fine

FUDGE

♩ = 80
Trumpet

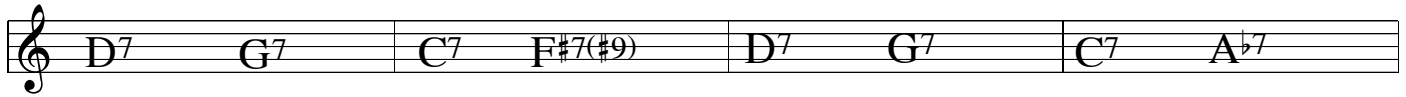
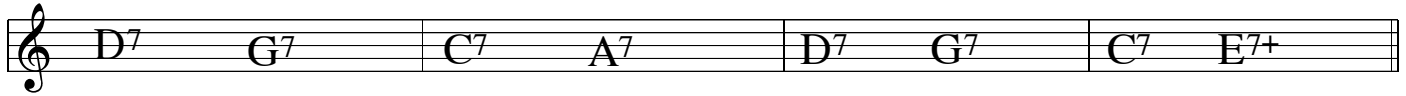
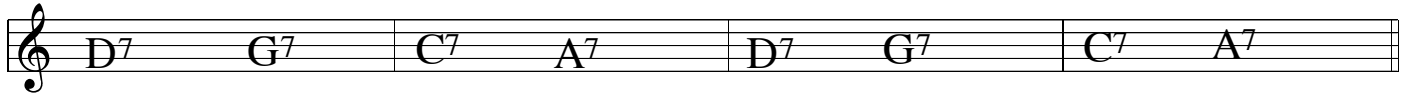
A

B

C

D

solos



DC al fine

♩ = 80
Tenor

FUDGE

Swing
Paul Busby
PRS

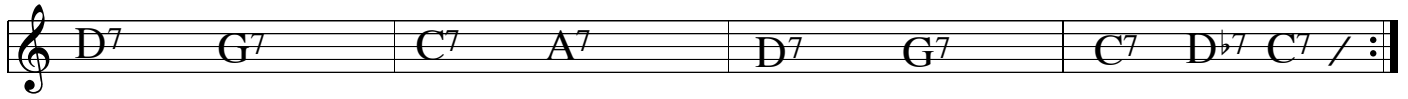
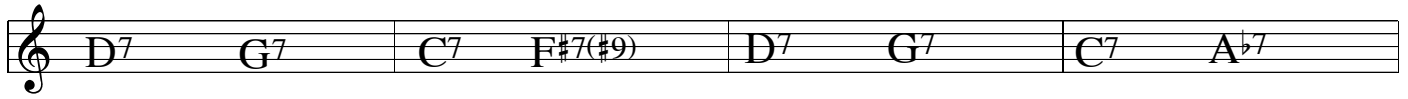
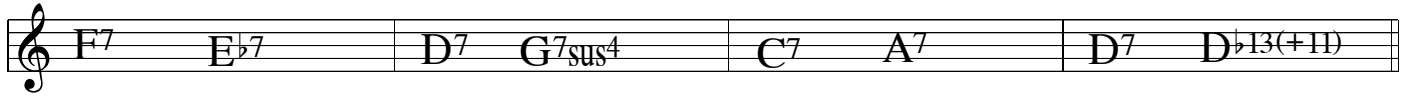
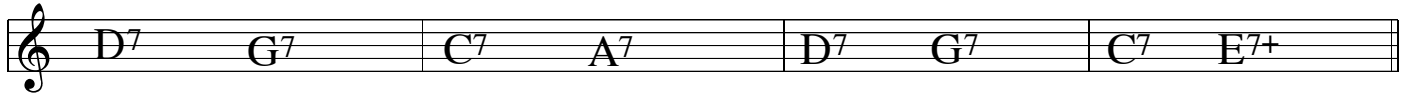
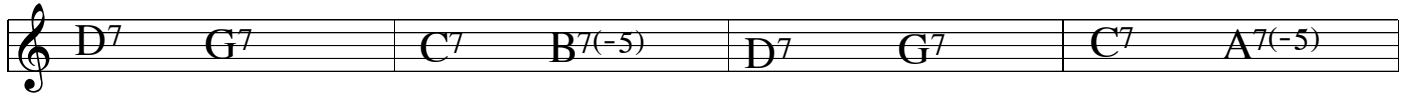
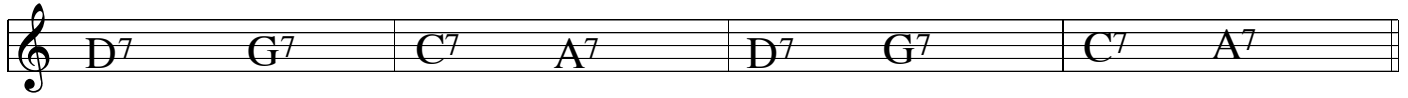
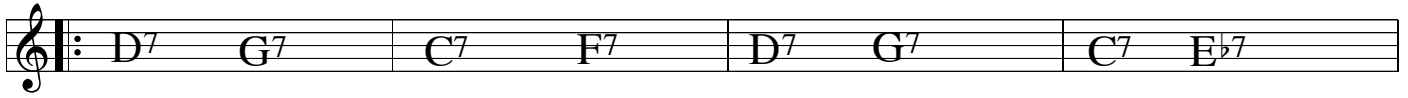
A

B

C

D

solos



DC al fine

FUDGE

SWING
Paul Busby
PRS

♩ = 80

Piano

A C7 F7 B \flat E9 E \flat 9 C7 F7 B \flat D7 D \flat 7

C7 F7 B \flat A \flat 7 G \circ G7 C7 F \circ F7 B \flat 7 A7 A \flat 7 G9

B C7 F7 B \flat B \flat 7(-5) A7(-5) C7 F7 B \flat A \flat 9 G7(-5)

C7 F7 B \flat A \flat 7 G \circ G7 C7 F \circ F7 B \flat 7 B \flat 7+ B \flat 7 D7

C E \flat 7 D \flat 13 C7 F7sus4 A7 B \flat 7 A \flat 13 G7 G \flat + F7+ E7(-5)

C E \flat 7 D \flat 13 C7 F7sus4 A7 B \flat 7 G7sus4 G7 C9 D \flat /B

D C7 F7 B \flat F7(#9) E7(#9) C7 F7 B \flat F7 G \flat 7

C7 F7 B \flat A \flat 7 G \circ G7 C7 F \circ F7 B \flat 7 B9 B \flat 9 *fine*

solos

Chords: C7 F7 B \flat 7 E \flat 7 C7 F7 B \flat 7 D \flat 7

Chords: C7 F7 B \flat 7 G7 C7 F7 B \flat 7 G7

Chords: C7 F7 B \flat 7 A7(-5) C7 F7 B \flat 7 G7(-5)

Chords: C7 F7 B \flat 7 G7 C7 F7 B \flat 7 D7+

Chords: E \flat 7 D \flat 7 C7 F7sus4 B \flat 7 A \flat 7 G7 F \sharp 7+ F7 E \flat 7(-5)

Chords: E \flat 7 D \flat 7 C7 F7sus4 B \flat 7 G7 C7 B13(+11)

Chords: C7 F7 B \flat 7 E7(#9) C7 F7 B \flat 7 G \flat 7

Chords: C7 F7 B \flat 7 G7 C7 F7 B \flat 7 B7 B \flat 7 / :||

DC al fine

♩ = 80
Bass

FUDGE

wild fill

SWING
Paul Busby
PRS

A $E\flat 7$ $D\flat 7$

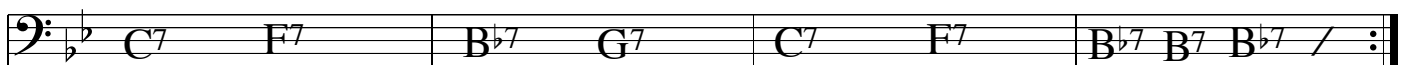
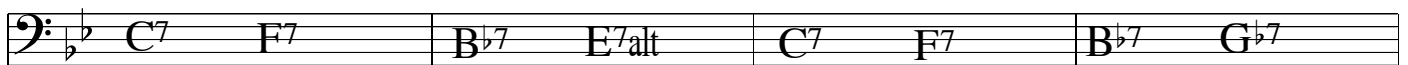
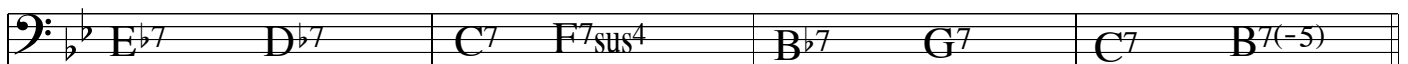
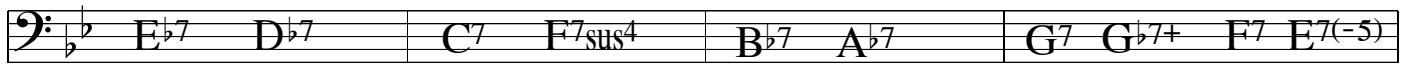
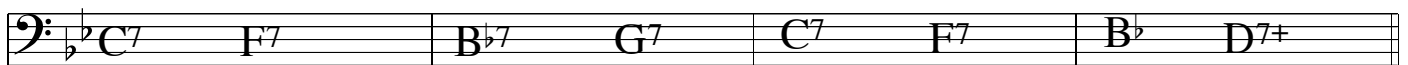
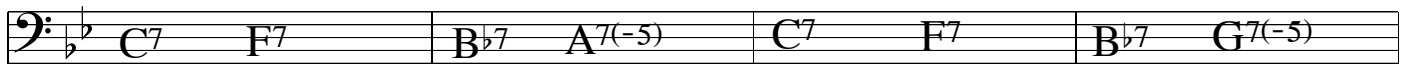
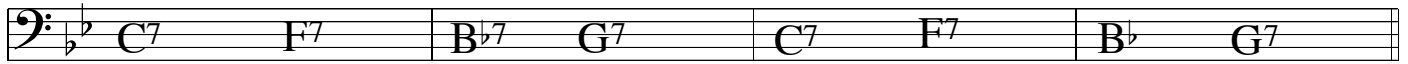
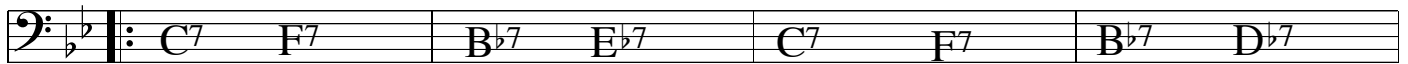
B $A 7(-5)$ $G 7(-5)$

C

$B 7(-5)$

D $E 7 \text{alt}$ $G\flat 7(\#9)$

$B\flat 7$ *fine*



DC al fine

FUDGE

Swing
Paul Busby
PRS

♩ = 80 **A** **B**

Drums

First staff of music for section A, first system. It features a bass clef and a 4/4 time signature. The notation includes quarter notes, eighth notes, and a cymbal crash with a sharp sign.

Second staff of music for section A, second system. It continues the rhythmic pattern with quarter and eighth notes.

C

First staff of music for section C. It consists of a series of quarter notes on a single pitch.

Second staff of music for section C, ending with a cymbal crash and sharp sign.

D

First staff of music for section D, featuring quarter notes and eighth notes.

Second staff of music for section D, ending with a cymbal crash and sharp sign, followed by the word "fine".

solos

A single staff of music with a bass clef, containing four measures, each labeled "play 8".

DC al fine

♩ = 80

FUDGE

Swing
Paul Busby
PRS

Trombone

A

B

C

D

solos

Bass clef, key signature of two flats, repeat sign. Chords: C7, F7, B♭7, E♭7, C7, F7, B♭7, D♭7

Bass clef, key signature of two flats. Chords: C7, F7, B♭7, G7, C7, F7, B♭7, G7

Bass clef, key signature of two flats. Chords: C7, F7, B♭7, A7(-5), C7, F7, B♭7, G7(-5)

Bass clef, key signature of two flats. Chords: C7, F7, B♭7, G7, C7, F7, B♭7, D7+

Bass clef, key signature of two flats. Chords: E♭7, D♭7, C7, F7sus4, B♭7, A♭7, G7, G♭7+, F7, E7(-5)

Bass clef, key signature of two flats. Chords: E♭7, D♭7, C7, F7sus4, B♭7, G7, C7, B13(+11)

Bass clef, key signature of two flats. Chords: C7, F7, B♭7, E7(#9), C7, F7, B♭7, G♭7

Bass clef, key signature of two flats. Chords: C7, F7, B♭7, G7, C7, F7, B♭7, B7, B♭7 / :||

This is the same as the tenor part

DC al fine