

Vocal/Piano

ONE PLUS ONE

STRAIGHT 8's
 Lyrics by John Harris
 Music by Paul Busby

♩ = 145

Am⁷ Em⁷ Am⁷ Em⁷ A¹³

A *When ready*

Am⁷ Em⁹ Am⁷ Em¹¹ A¹³ Am⁷ D⁷ C^Δ Bm⁷E⁷sus⁴

See the peo- ple move to- ge- ther, See the peo- ple move a- part,

Am⁷ Em⁹ Am⁷ Em¹¹ A¹³ D⁷sus⁴ Bm⁷/_C Bm¹¹ B^{Δ(-5)}

Chan- ging shapes and chan- ging pat- terns, A kal- ei- der- sco- pic farce.

A^{7(b9)} Dm^Δ A^{7(#9)} D⁷⁽⁻⁵⁾ A^{b7(-5)} G⁹ Cm⁷ F⁷ E^{7(#9)}

Is it my i- ma- gin- a- tion, Tun- nel vi- sion in re- verse?

Am⁷ Em⁹ Am⁷ D⁷ G⁶ F^{#7} C^{#m7} F^{#7} F^{#0}/_C

Are they on- ly se- parate peo- ple, diff- erent minds, Or are they

B⁷sus⁴ Dm⁶ E⁷ **B** Am⁷ Em⁹ Am⁷ Em¹¹ A¹³

one? Now see the rip- ples on the wa- ter,

Am⁷ D⁷ C^Δ Bm⁷ E⁷sus⁴ Am⁷ Em⁹ Am⁷ Em¹¹ A¹³

Gen- tly rol- ling to and fro, Like the waves u- pon the oc- ean,

D⁷sus⁴ Bm⁷/_C Bm¹¹ B^{Δ(-5)} A^{7(b9)} Dm^Δ A^{7(#9)} D⁷⁽⁻⁵⁾ A^{b7(-5)}

Go- ing where the moon says "go", Is it my i- ma- gin- a- tion,

G⁹ Cm⁷ F⁷ E^{7(#9)} Am⁷ Em⁹ Am⁷ D⁷ G⁶

Tu- nel vi- sion in re- verse? Are the peo- ple and the wa- ter dif- ferent

C^Δ F^{#7} F^{#m7} Bm¹¹ Emsus⁴

things, or are they one?

C Fm¹¹ D^bΔ E^bm⁷ Fm⁷ G^bΔ B^Δ B^bΔ

Then if e-very-thing is one, It de-fies ma-the-ma-tics and damns the schools.

E^bm¹¹ E^Δ Fm⁷ F[#]m⁷ B⁷ D[#]∅ G[#]7

Teachers e-verywhere must learn, As a ma-tter of course, Some new kinds of rules:

D C[#]m⁷ G[#]7sus⁴ C[#]m⁷ G[#]7sus⁴ C[#]m⁷ G[#]7sus⁴ D[#]m⁷ G[#]7sus⁴ C[#]m⁷

One plus one is one: It's as sim-ple as that.

Dm⁷ A⁷sus⁴ Dm⁷ A⁷sus⁴ Dm⁷ A⁷sus⁴ Em⁷ A⁷sus⁴ F[#]7(9)

Two and two are one: It's as sim-ple as that.

E B⁷(b9+5) Em⁹ A⁷ Em¹¹ A¹³ Am⁷ D⁷ C^Δ Bm⁷ E⁷sus⁴

If peo-ple are com-posed of wa-ter, They e-volved out of the sea,

Am⁷ Em⁹ Am⁷ Em¹¹ A¹³ D⁷sus⁴ $\frac{Bm^7}{C}$ Bm¹¹ B^bΔ(=5)

They are part of all that's li-ving, Part of ev-ery-thing we see.

A⁷(b9) Dm^Δ A⁷(#9) D⁷(=5) A^b7(=5) G⁹ Cm⁷ F⁷ E⁷(#9)

Is it my i-ma-gin-a-tion, Play-ing tricks of time on me?

Am⁷ Em⁹ Am⁷ D⁷ G⁶ C^Δ F⁷ F[#]m⁷ Bm¹¹ Emsus⁴ *fine*

When will ev-ery-bo-dy know that one and one can make just one?

solos - still straight 8's Latin feel

Am⁷ Fm⁷ C[#]m⁷ Dm⁷ E⁷sus⁴

8 bars 8 bars 4 bars 4 bars 8 bars

DS al fine

ONE PLUS ONE

words by John Harris
music by Paul Busby

♩ = 145
Tenor

4 bars of 7/4

Musical staff for the first section, 4 bars of 7/4 time signature. The staff is empty with a treble clef and a 7/4 time signature.

A $\frac{7}{4}$

8 bars of 7/4

Musical staff for section A, 8 bars of 7/4 time signature. The staff is empty with a treble clef and a 7/4 time signature.

B

Musical staff for section B, first line of music. The staff contains a treble clef, a key signature of one sharp (F#), and a 7/4 time signature. The first bar contains a dotted quarter note on G4, followed by an eighth rest, a quarter note on A4, a quarter note on B4, and a quarter note on C5.

Musical staff for section B, second line of music. The staff contains a treble clef, a key signature of one sharp (F#), and a 7/4 time signature. The first bar contains a dotted quarter note on G4, followed by an eighth rest, a quarter note on A4, a quarter note on B4, and a quarter note on C5.

Musical staff for section B, third line of music. The staff contains a treble clef, a key signature of one sharp (F#), and a 7/4 time signature. The first bar contains a dotted quarter note on G4, followed by an eighth rest, a quarter note on A4, a quarter note on B4, and a quarter note on C5.

Musical staff for section B, fourth line of music. The staff contains a treble clef, a key signature of one sharp (F#), and a 7/4 time signature. The first bar contains a dotted quarter note on G4, followed by an eighth rest, a quarter note on A4, a quarter note on B4, and a quarter note on C5.

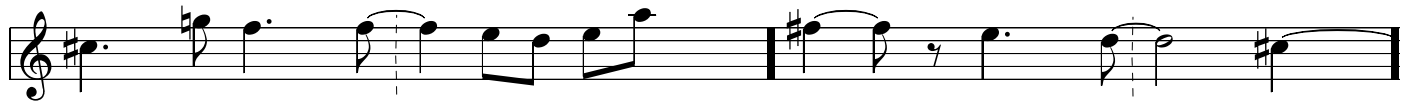
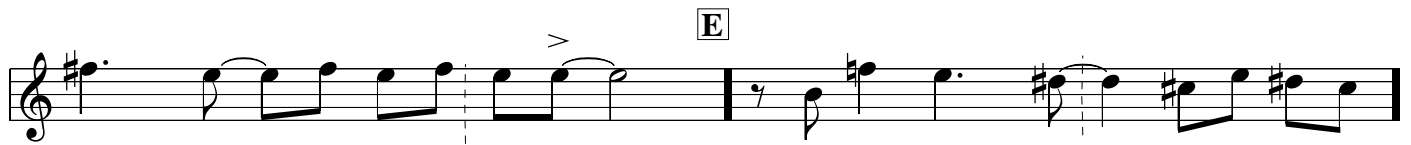
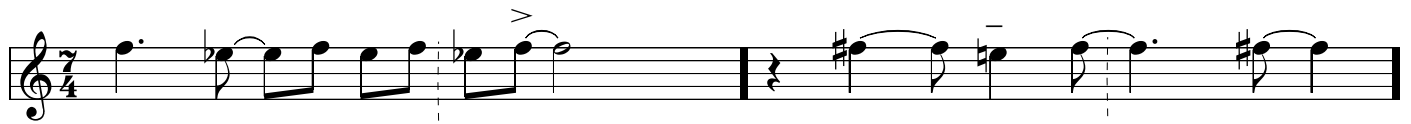
C

Musical staff for section C, first line of music. The staff contains a treble clef, a key signature of one sharp (F#), and a 7/4 time signature. The first bar contains a dotted quarter note on G4, followed by an eighth rest, a quarter note on A4, a quarter note on B4, and a quarter note on C5.

Musical staff for section C, second line of music. The staff contains a treble clef, a key signature of one sharp (F#), and a 7/4 time signature. The first bar contains a dotted quarter note on G4, followed by an eighth rest, a quarter note on A4, a quarter note on B4, and a quarter note on C5.

D

Musical staff for section D, first line of music. The staff contains a treble clef, a key signature of one sharp (F#), and a 7/4 time signature. The first bar contains a dotted quarter note on G4, followed by an eighth rest, a quarter note on A4, a quarter note on B4, and a quarter note on C5.



DS al fine

Riff 1

Musical notation for Riff 1, consisting of 10 staves. The notation includes various musical symbols such as notes, rests, accidentals (sharps, flats, naturals), and articulation marks (accents, slurs, breath marks). The key signature is one sharp (F#). The first staff begins with a treble clef and a 2/4 time signature. The notation is written in a single system across ten staves. The first staff contains two measures of music. The second staff contains four measures. The third staff contains two measures with rests. The fourth staff contains two measures with rests. The fifth staff contains four measures. The sixth staff contains four measures. The seventh staff contains four measures. The eighth staff contains four measures. The ninth staff contains four measures. The tenth staff contains four measures, ending with a double bar line.

Riff 2

Musical notation for Riff 2, consisting of 4 staves. The notation includes various musical symbols such as notes, rests, accidentals (sharps, flats, naturals), and articulation marks (accents, slurs, breath marks). The key signature is one sharp (F#). The first staff begins with a treble clef and a 2/4 time signature. The notation is written in a single system across four staves. The first staff contains four measures. The second staff contains four measures. The third staff contains four measures. The fourth staff contains four measures, ending with a double bar line.



ONE PLUS ONE

words by John Harris
music by Paul Busby

$\text{♩} = 145$
Trumpet

4 bars of 7/4

7/4 (4/4 + 3/4)



A

B

C

D

E

fine

solos

DS al fine

Riff 1

One plus one p.3
Trumpet

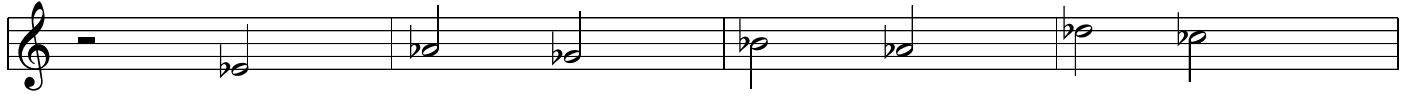
Musical notation for Riff 1, consisting of eight staves. The notation is in treble clef and includes various rhythmic values, accidentals, and articulation marks such as accents and slurs. The first staff begins with a quarter rest followed by eighth and quarter notes. The second staff continues the melodic line with eighth and quarter notes. The third and fourth staves feature rests followed by eighth notes with accents. The fifth and sixth staves show eighth notes with slurs and accents. The seventh staff continues with eighth notes and quarter notes. The eighth staff concludes the riff with eighth notes, quarter notes, and a final quarter rest.

Riff 2

Musical notation for Riff 2, consisting of four staves. The notation is in treble clef and features dotted quarter notes, eighth notes, and quarter notes. The first staff starts with a dotted quarter note followed by a quarter rest. The second and third staves continue the pattern with dotted quarter notes and eighth notes. The fourth staff concludes the riff with a dotted quarter note, an eighth note, and a quarter rest.

Riff 2 continued

One plus one p.4
Trumpet



ONE PLUS ONE

words by John Harris
music by Paul Busby

♩ = 145

Alto

4 bars of 7/4

7/4 (4/4 + 3/4)

§

A

B

C

D

E

fine

solos

F#m7	Dm7	Ebm7	/	/	F7alt
for 8 bars	for 4 bars				

Bbm7	Bm7	G#ø / C#	C#7alt
for 4 bars	for 4 bars	for 7 bars	:

DS al fine

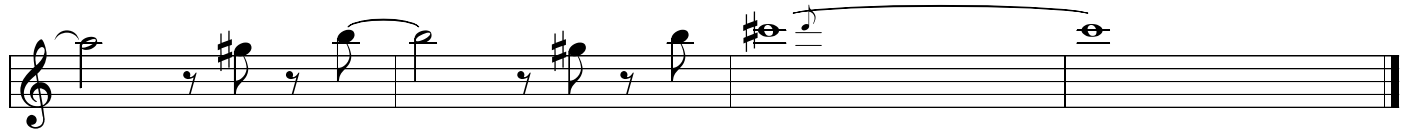
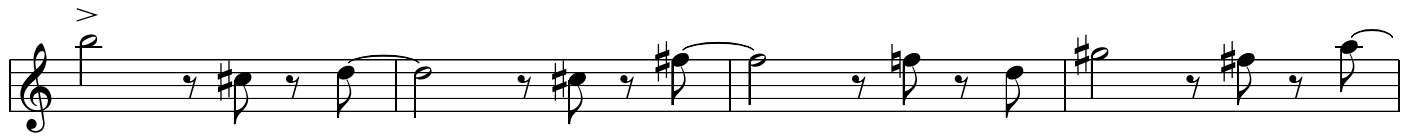
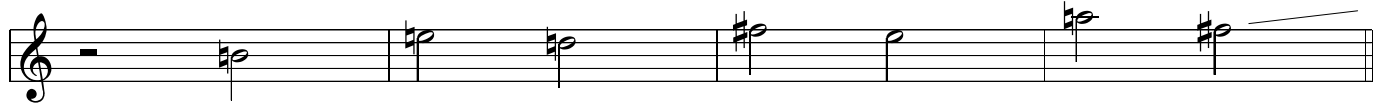
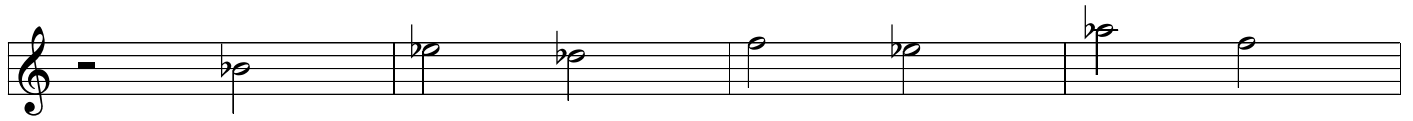
Riff 1

One plus one p.3
Alto

Musical notation for Riff 1, Alto part, consisting of 8 staves of music. The notation includes various rhythmic values, accidentals, and articulation marks such as accents (>) and slurs.

Riff 2

Musical notation for Riff 2, Alto part, consisting of 4 staves of music. The notation includes various rhythmic values, accidentals, and articulation marks such as accents (>) and slurs.



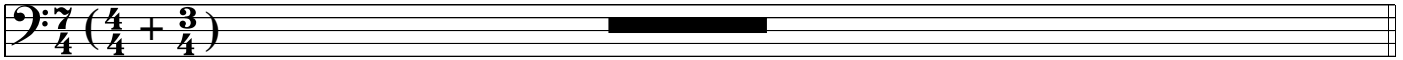
ONE PLUS ONE

words by John Harris
music by Paul Busby

♩ = 145
Trombone

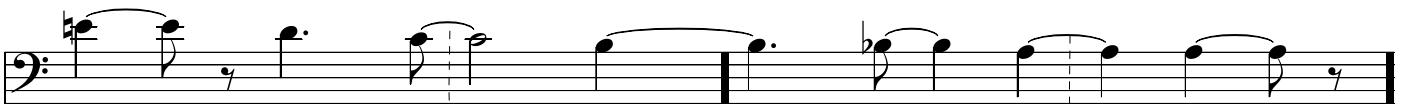
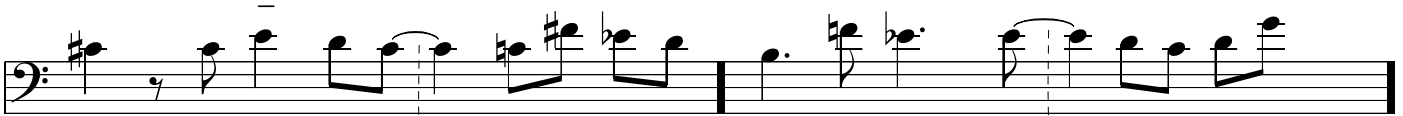
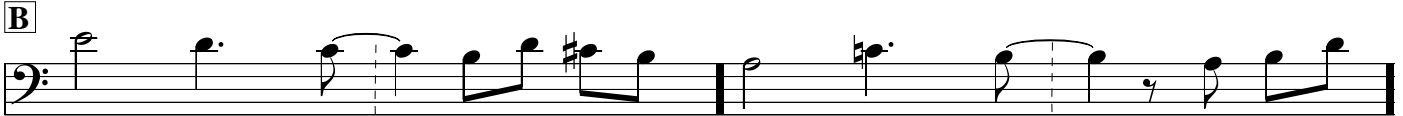
4 bars of 7/4

7/4 (4/4 + 3/4)



A

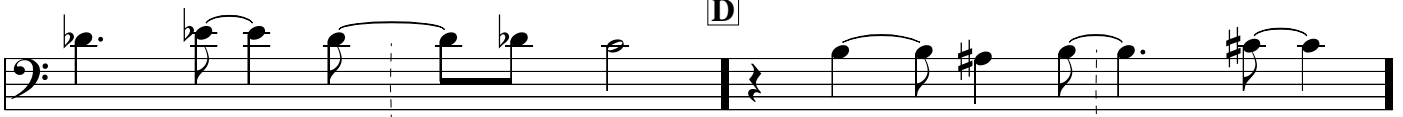
8 bars of 7/4

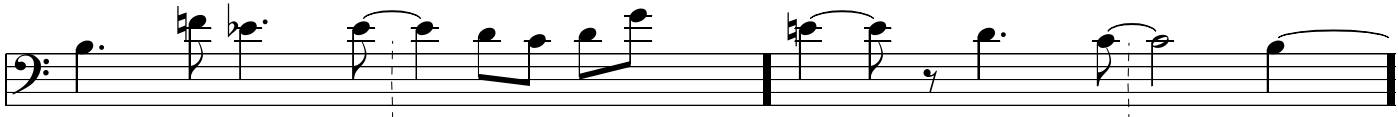
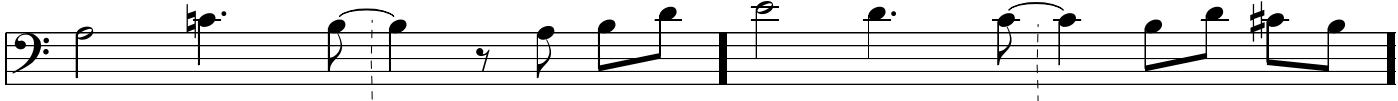
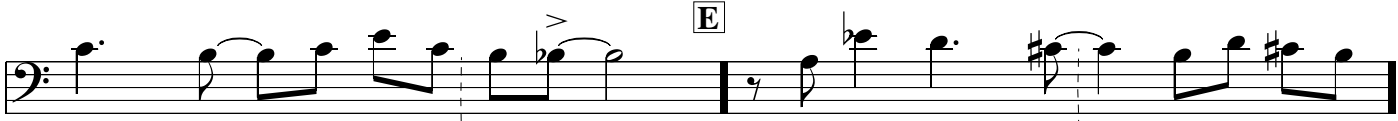
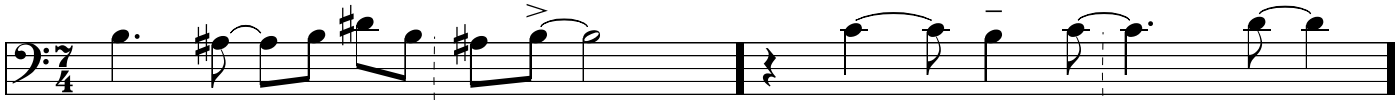


C



D





solos

Am ⁷	Fm ⁷	G ^b m ⁷	/	/	A ^b 7alt
for 8 bars	for 4 bars				

D ^b m ⁷	Dm ⁷	B ^ø / E	E ⁷ alt
for 4 bars	for 4 bars	for 7 bars	:

DS al fine

Riff 1

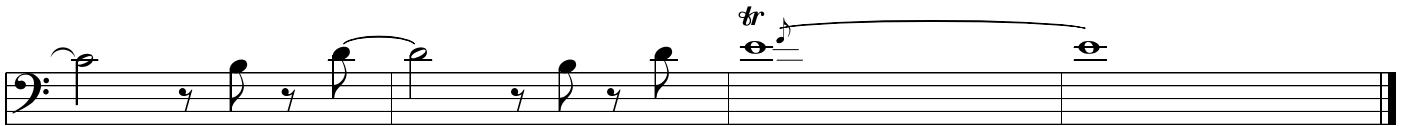
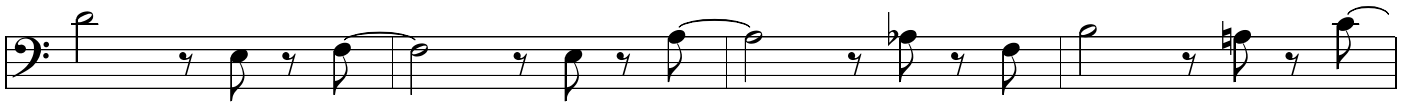
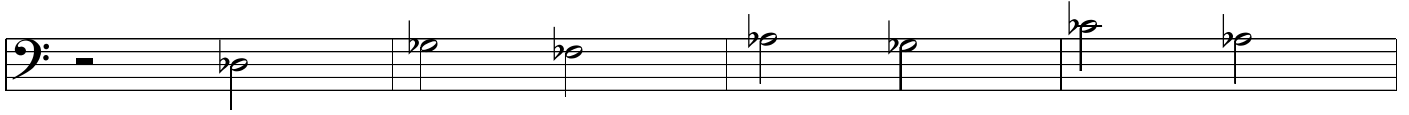
Musical score for Riff 1, Trombone part, 4/4 time signature. The score consists of eight staves of music. The first two staves contain the main melodic line, starting with a quarter rest followed by eighth notes and quarter notes. The next two staves show a more active line with eighth and sixteenth notes, including accents and slurs. The final four staves feature a descending melodic line with slurs and accents, ending with a trill (tr) on the final note.

Riff 2

Musical score for Riff 2, Trombone part, 4/4 time signature. The score consists of four staves of music. The first two staves feature a rhythmic pattern of quarter notes and eighth notes with accents. The last two staves show a similar pattern but with a key signature change to one sharp (F#) and a final note with a sharp sign (#).

riff 2 continued

One plus one p.4
Trombone



Piano

solo 1st 2 times
1st time as is then vary it

ONE PLUS ONE

STRAIGHT 8's
Lyrics by John Harris
Music by Paul Busby

$\text{♩} = 145$

Am⁷ Em⁹ Am⁷ $\frac{\text{Dm}^6}{\text{F}}$ E7+ **4 times in all**

A *tune - cue only*

Am⁷ Em⁹ Am⁷ Em¹¹ A¹³ Am⁷ D⁷ C^Δ Bm⁷E⁷sus⁴

Am⁷ Em⁹ Am⁷ Em¹¹ A¹³ D⁷sus⁴ $\frac{\text{Bm}^7}{\text{C}}$ Bm¹¹ B^{Δ(-5)}

A⁷(b⁹) Dm^Δ A⁷(#⁹) D⁷(=5) A^{b7}(-5) G⁹ Cm⁷ F⁷ E⁷(#⁹)

Am⁷ Em⁹ Am⁷ D⁷ G⁶ F^{#7} C^{#m7} F^{#7} $\frac{\text{F}\#^{\circ}}{\text{C}}$

B⁷sus⁴ $\frac{\text{Dm}^6}{\text{F}}$ E⁷ **B** Am⁷ Em⁹ Am⁷ Em¹¹ A¹³

Am⁷ D⁷ C^Δ Bm⁷ E⁷sus⁴ Am⁷ Em⁹ Am⁷ Em¹¹ A¹³

D⁷sus⁴ $\frac{\text{Bm}^7}{\text{C}}$ Bm¹¹ B^{Δ(-5)} A⁷(b⁹) Dm^Δ A⁷(#⁹) D⁷(=5) A^{b7}(-5)

G⁹ Cm⁷ F⁷ E⁷(#⁹) Am⁷ Em⁹ Am⁷ D⁷ G⁶

C^Δ F^{#7} F^{#m7} Bm¹¹ Emsus⁴

C Fm¹¹ D^bΔ E^bm⁷ Fm⁷ G^bΔ B^Δ B^bΔ

E^bm¹¹ E^Δ Fm⁷ F[#]m⁷ B⁷ D[#]∅ G[#]7

D C[#]m⁷ G[#]7sus⁴ C[#]m⁷ G[#]7sus⁴ C[#]m⁷ G[#]m⁷ D[#]m⁷ G[#]m⁷ C[#]m⁷

Dm⁷ A⁷sus⁴ Dm⁷ A⁷sus⁴ Dm⁷ Am⁷ Em⁷ Am⁷ F[#]7(9)

E B⁷(b9+5) Em⁹ A⁷ Em¹¹ A¹³ Am⁷ D⁷ C^Δ Bm⁷ E⁷sus⁴

Am⁷ Em⁹ Am⁷ Em¹¹ A¹³ D⁷sus⁴ $\frac{Bm^7}{C}$ Bm¹¹ B^bΔ(=5)

A⁷(b9) Dm^Δ A⁷(9) D⁷(=5) A^b7(=5) G⁹ Cm⁷ F⁷ E⁷(9)

Am⁷ Em⁹ Am⁷ D⁷ G⁶ C^Δ F[#]7 F[#]m⁷ Bm¹¹ Em^{sus}⁴ *fine*

solos - still straight 8's Latin feel

Am ⁷ for 8 bars	Fm ⁷ for 4 bars	G ^b m ⁷	∕	∕	A ^b 7(b9+5)
-------------------------------	-------------------------------	-------------------------------	---	---	------------------------

D ^b m ⁷ for 4 bars	Dm ⁷ for 4 bars	$\frac{B\emptyset}{E^7}$ for 7 bars	E ⁷ alt
---	-------------------------------	--	--------------------

DS al fine

ONE PLUS ONE

STRAIGHT 8's
Lyrics by John Harris
Music by Paul Busby

♩ = 145
Drums

tacet 2 bars of 7/4

HH

Musical notation for the first staff, showing a 7/4 time signature with a 3/4 section and a series of HH notes.

A

bass drum line=only cue for bass part and need not be played

H.H. continues

Musical notation for the second staff, showing a bass line.

Musical notation for the third staff, showing a bass line.

Musical notation for the fourth staff, showing a bass line.

Musical notation for the fifth staff, showing a bass line.

B

Musical notation for the sixth staff, showing a bass line.

Musical notation for the seventh staff, showing a bass line.

Musical notation for the eighth staff, showing a bass line.

Musical notation for the ninth staff, showing a bass line.

Musical notation for the tenth staff, showing a bass line.

C

Two staves of musical notation in bass clef. The first staff contains 8 measures of music, and the second staff contains 8 measures. The notation consists of eighth and quarter notes, with some beamed eighth notes.

D

Two staves of musical notation in bass clef. The first staff contains 8 measures, and the second staff contains 8 measures. Accents (>) are placed over the first notes of measures 1, 5, and 9 in both staves. Some notes are beamed eighth notes.

E

Four staves of musical notation in bass clef. Each staff contains 8 measures of music, for a total of 32 measures. The notation consists of eighth and quarter notes.

fine

solos - still straight 8's with Latin feel

A bar line structure diagram in bass clef, 4/4 time. It shows a sequence of bar counts: 8 bars, 4 bars, 4 bars, 4 bars, 4 bars, and 8 bars. The diagram uses vertical lines to separate the bars and double bar lines with repeat dots at the end.

DS al fine

ONE PLUS ONE

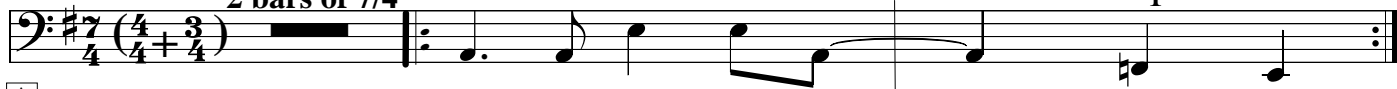
STRAIGHT 8's
Lyrics by John Harris
Music by Paul Busby

♩ = 145

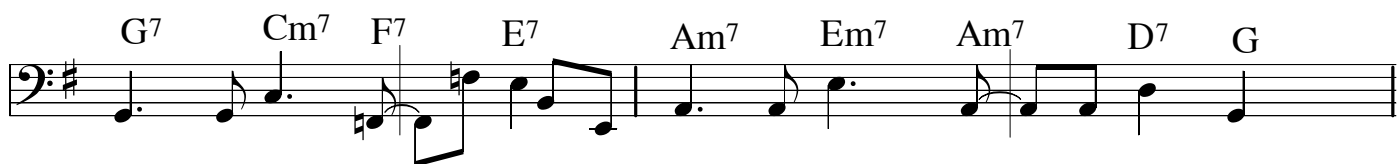
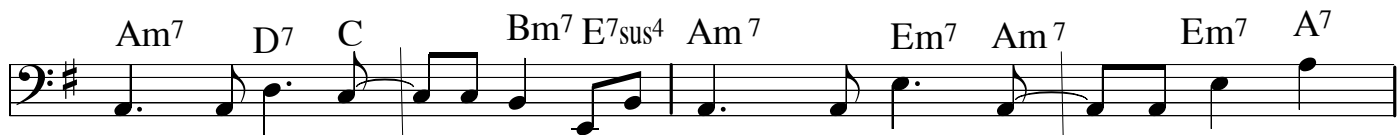
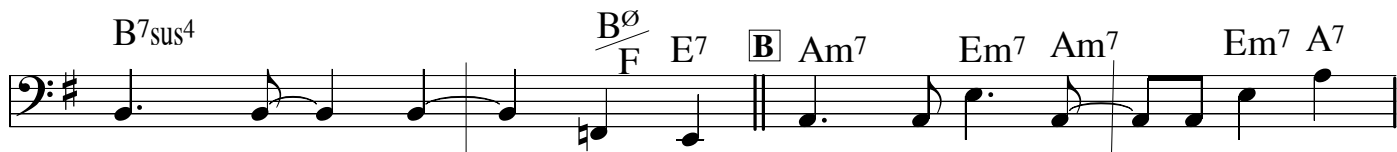
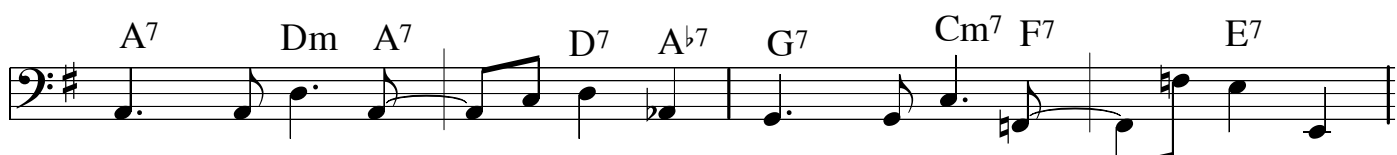
Bass

piano
2 bars of 7/4

$\frac{Dm}{F}$ 2 times in all
 $E7^+$



A



C Fm⁷ D^b E^bm⁷ Fm⁷ F[#] B B^b

E^bm⁷ E Fm⁷ F[#]m⁷ B⁷ E^b∅ A^b7

D D^bm⁷ A^b7sus⁴ D^bm⁷ A^b7sus⁴ D^bm⁷ A^b7sus⁴ D^bm⁷ A^b7sus⁴ D^bm⁷

Dm⁷ A⁷sus⁴ Dm⁷ A⁷sus⁴ Dm⁷ A⁷sus⁴ Dm⁷ A⁷sus⁴ F[#]7

E B⁷ Em⁷ A⁷ Em⁷ A⁷ Am⁷ D⁷ C Bm⁷ E⁷sus⁴

Am⁷ Em⁷ Am⁷ Em⁷ A⁷ D⁷sus⁴ $\frac{Bm^7}{C}$ Bm⁷ B^b

A⁷ Dm A⁷ D⁷ A^b7 G⁷ Cm⁷ F⁷ E⁷

Am⁷ Em⁷ Am⁷ D⁷ G C F[#]7 F[#]m⁷ Bm⁷ Em *fine*

solos - still straight 8's Latin feel

Am⁷ Fm⁷ G^bm⁷ / / A^b7alt

D^bm⁷ Dm⁷ $\frac{B\emptyset}{E}$ E⁷alt

DS al fine