

Bass

MUSE

Paul Busby
PRS

till ready

♩ = 138

funky

Intro

Bass staff 1: 4/4 time signature, F7 chord, *sparsely*

Bass staff 2: *sparsely* (F7), *busy solo fill* (z), *simile* (2) (//)

Bass staff 3: (2) (//)

Bass staff 4: (2) (//)

Bass staff 5: (2) (//)

Bass staff 6: *fairly sparsely* (F7), (z), (z), (z)

Bass staff 7: (z), (z), (z), (z) with a fermata over the last note. *rit.* in a circle below the staff.

slow but in tempo (2-feel)

Bass staff 8: Chords: E^b7sus4, B^bΔ / D, D^b7sus4, G[∅] / C, A^bmΔ / B, B^b7sus4

Bass staff 9: Chords: F[#]mΔ / A, E^b∅ / A^b, G^{Δ(+5)}, Em6, E^b7sus4, C7sus4 with a fermata. *rit.* below the staff.

1st Tempo

solos

when ready, rit until a dead stop, then...

Bass staff with a double bar line and repeat sign. Chord: F7. Text: *for as long as required*

slow tempo

scales: *Db*

Bb

Gb

Ab

Abm

Bass staff with five measures. Chords: E^b7sus⁴, B^bΔ / D, D^b7sus⁴, G[∅] / C, A^bmΔ / B

Bass staff with six measures. Chords: F[#]mΔ / A, F[#]m or E / A^b∅, Em / G^{Δ(+5)}, / Em⁶, Ab / E^b7sus⁴, / C⁷sus⁴ :||

rit.

after solos

1st Tempo

till ready

*tune
sparsely*

busy solo fill

2

Bass staff with four measures. Chords: F7, F7, /, 2 //

Bass staff with two measures. Each measure contains a double bar line with a '2' above it and a double slash below it (//).

Bass staff with two measures. Each measure contains a double bar line with a '2' above it and a double slash below it (//).

Bass staff with two measures. The first measure contains a double bar line with a '2' above it and a double slash below it (//). The second measure contains a double bar line with 'F7' above it, three diagonal slashes below it, and a final note with an accent (>) above it.

Alto

MUSE

Paul Busby
PRS

♩ = 138

funky
Intro

till ready

rit.

fine

slow but in tempo

Musical staff with notes and dynamics *mp*. The staff contains a series of notes with various articulations and dynamics markings.

Musical staff with notes and dynamics markings.

Musical staff with notes and dynamics markings *rit.*

solos 1st Tempo

when ready, rit until a dead stop, then...

Musical staff with notes and dynamics markings *for as long as required*.

slow tempo

Musical staff with chords: $C7_{sus4}$, $\frac{G\Delta}{B}$, $B^{\flat}7_{sus4}$, $\frac{E\emptyset}{A}$, $\frac{Fm\Delta}{A^{\flat}}$

Musical staff with chords: $\frac{E^{\flat}m\Delta}{G^{\flat}}$, $\frac{C\emptyset}{F}$, $E^{\Delta(+5)}$, $C^{\sharp}m6$, $C7_{sus4}$, $A7_{sus4}$

rit.

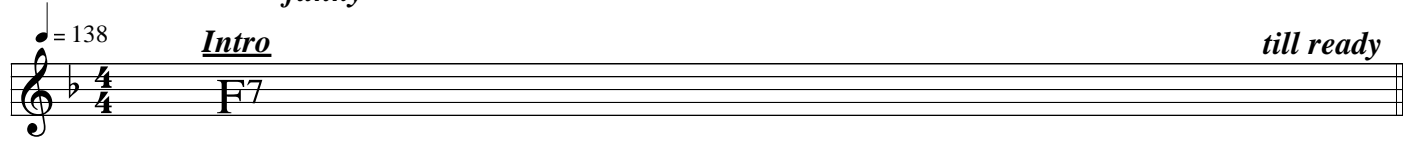
After solos, DC al Fine

Electric Piano *funky*

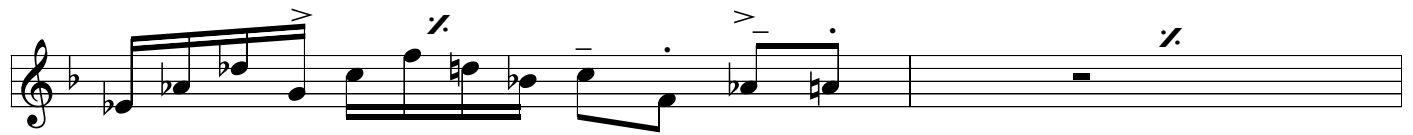
MUSE

Paul Busby

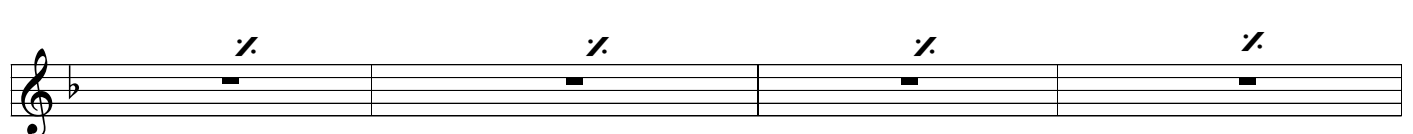
$\text{♩} = 138$ *Intro* *till ready*



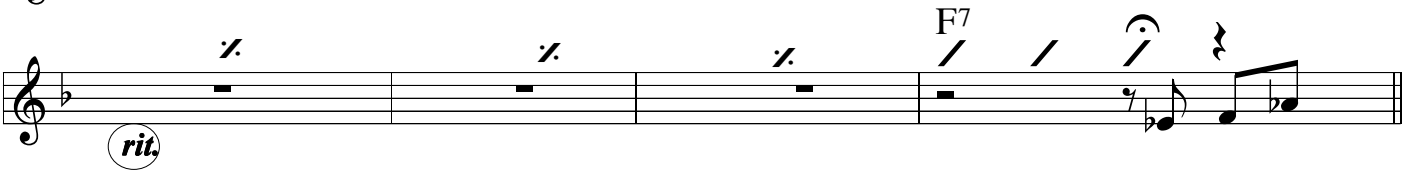
F7



fine



rit. *F7*



slow but in tempo

Muse p.2
Piano

$E^{\flat}7_{sus4}$ $\frac{B^{\flat}\Delta}{D}$ $D^{\flat}7_{sus4}$

G^{\emptyset} $\frac{A^{\flat}m\Delta}{B}$ $\frac{F^{\#}m\Delta}{A}$ $\frac{D^{\#}\emptyset}{G^{\#}}$

$G^{\Delta(+5)}$ Em^6 $E^{\flat}7_{sus4}$ $C^7_{sus4}(add A)$

rit.

solos 1st Tempo

when ready, rit until a dead stop, then...

F^7 *for as long as required*

slow tempo

$E^{\flat}7_{sus4}$ $\frac{B^{\flat}\Delta}{D}$ $D^{\flat}7_{sus4}$ $\frac{G^{\emptyset}}{C}$ $\frac{A^{\flat}m\Delta}{B}$

$\frac{F^{\#}m\Delta}{A}$ $\frac{E^{\flat}\emptyset}{A^{\flat}}$ $G^{\Delta(+5)}$ Em^6 $E^{\flat}7_{sus4}$ C^7_{sus4}

rit.

After solos, DC al Fine

Trombone harmony

MUSE

Paul Busby
PRS

♩ = 138 *Intro*

funky

till ready

Musical staff with bass clef, key signature of one flat, and 4/4 time signature. A thick black barred staff is present.

Musical staff with bass clef, key signature of one flat, and 4/4 time signature. Contains a sequence of eighth notes with slurs and accents.

Musical staff with bass clef, key signature of one flat, and 4/4 time signature. Contains a sequence of eighth notes with slurs and accents.

Musical staff with bass clef, key signature of one flat, and 4/4 time signature. Contains a sequence of eighth notes with slurs and accents.

Musical staff with bass clef, key signature of one flat, and 4/4 time signature. Contains a sequence of eighth notes with slurs and accents.

Musical staff with bass clef, key signature of one flat, and 4/4 time signature. Contains a sequence of eighth notes with slurs and accents.

Musical staff with bass clef, key signature of one flat, and 4/4 time signature. Contains a sequence of eighth notes with slurs and accents.

Musical staff with bass clef, key signature of one flat, and 4/4 time signature. Contains a sequence of eighth notes with slurs and accents.

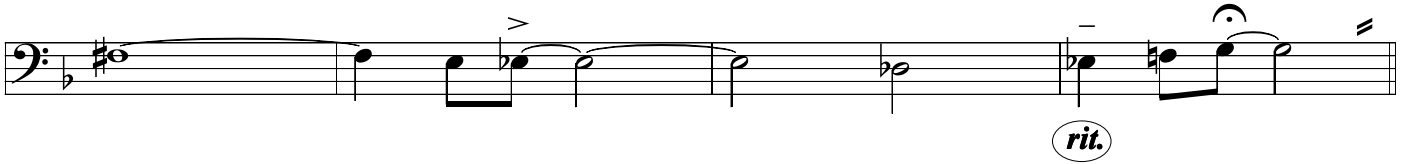
Musical staff with bass clef, key signature of one flat, and 4/4 time signature. Contains a sequence of eighth notes with slurs and accents, ending with a *fine* marking.

Musical staff with bass clef, key signature of one flat, and 4/4 time signature. Contains a sequence of whole rests.

Musical staff with bass clef, key signature of one flat, and 4/4 time signature. Contains a sequence of whole rests followed by a *Trpt cue 8va* marking.

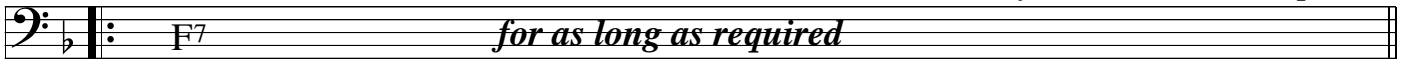
rit.

slow but in tempo

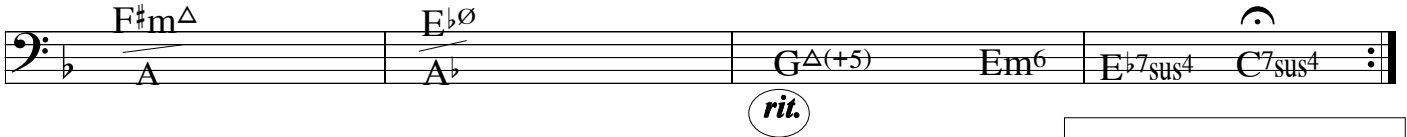


solos 1st Tempo

when ready, rit until a dead stop, then...



slow tempo



After solos, DC al Fine

Tenor harmony

MUSE

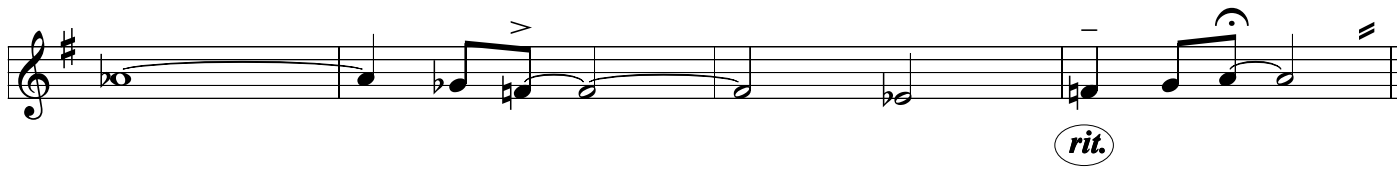
Paul Busby
PRS

$\text{♩} = 138$ *Intro*

funky

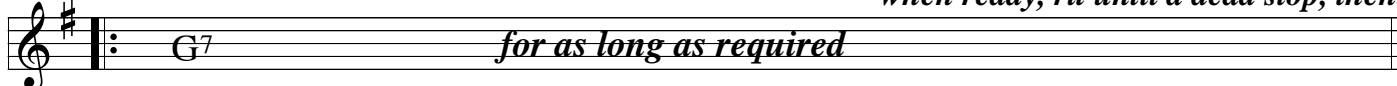
till ready

slow but in tempo

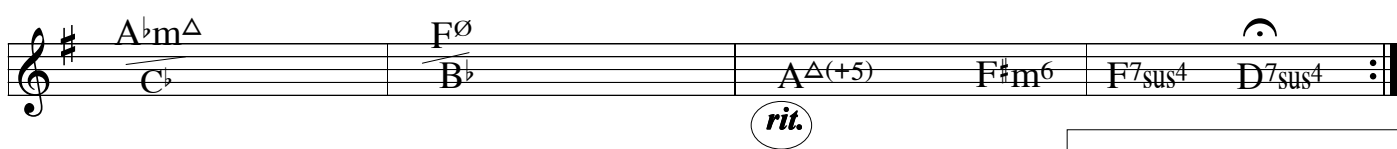


solos 1st Tempo

when ready, rit until a dead stop, then...



slow tempo



After solos, DC al Fine

Trumpet/Clarinet/Tenor (8va)

MUSE

Paul Busby
PRS

♩ = 138

funky

Intro

till ready

slow but in tempo

Musical staff with notes and dynamics *mp*. The staff contains a melodic line starting with a half note G4, followed by quarter notes A4, Bb4, and C5. There are accents and slurs over various notes.

Musical staff with notes, continuing the melodic line from the previous staff.

Musical staff with notes and dynamics *rit.*. The staff concludes with a half note G4 and a fermata.

solos 1st Tempo

when ready, rit until a dead stop, then...

Musical staff with chord *G7* and text *for as long as required*. The staff is mostly empty, indicating a sustained chord.

slow tempo

Musical staff with chords: *F7sus4*, *C^Δ* / *E*, *E^b7sus4*, *A[∅]* / *D*, *B^bm^Δ* / *D^b*.

Musical staff with chords: *A^bm^Δ* / *C*, *F[∅]* / *B^b*, *A^{Δ(+5)}*, *F[#]m⁶*, *F7sus4*, *D7sus4*. The staff ends with a fermata.

rit.

After solos, DC al Fine

SCALE
CHORD

MUSE

Bb Pitch

(1st tempo)

||: G⁷ for as long as required

when ready, rit until a dead stop, then... ||

slow tempo

$\frac{E^b}{F^{11}}$	$\frac{C}{C (E \text{ bass})}$	$\frac{B^b m^7}{E^b_{11}}$	$\frac{Cm^7}{D^{11}}$	$\frac{B^b m}{B^b m (D^b \text{ bass})}$
----------------------	--------------------------------	----------------------------	-----------------------	--

$\frac{A^b m}{A^b m (B \text{ bass})}$	$\frac{A^b m^{(7)}}{B^b_{11}}$	$\frac{F^{\#} m}{A^{\Delta(+5)}$	$\frac{F^{\#} m^6}{F^{\#} m^6}$	$\frac{Cm^7}{F^{11}}$	$\frac{\overset{\circ}{}}{D^{11}}$	
--	--------------------------------	----------------------------------	---------------------------------	-----------------------	------------------------------------	--

rit.

SCALE
CHORD

MUSE

Concert Pitch

(1st tempo)



F7 for as long as required

when ready, rit until a dead stop, then...

slow tempo

$\frac{D^{\flat}}{E^{\flat}11}$	$\frac{B^{\flat}}{B^{\flat} (D \text{ bass})}$	$\frac{A^{\flat}m7}{D^{\flat}11}$	$\frac{B^{\flat}m7}{C11}$	$\frac{A^{\flat}m}{A^{\flat}m (B \text{ bass})}$
---------------------------------	--	-----------------------------------	---------------------------	--

$\frac{F^{\sharp}m}{F^{\sharp}m (A \text{ bass})}$	$\frac{F^{\sharp}m^{(7)}}{G^{\sharp}11}$	$\frac{Em}{G^{\Delta(+5)}$	Em^6	$\frac{B^{\flat}m7}{E^{\flat}11}$	$\overset{\frown}{C11}$	
--	--	----------------------------	--------	-----------------------------------	-------------------------	-----------

rit.

SCALE
CHORD

MUSE

E_b Pitch

(1st tempo)

||: D⁷ for as long as required

when ready, rit until a dead stop, then... ||

slow tempo

$\frac{B^{\flat}}{C^{11}}$	$\frac{G}{G (B \text{ bass})}$	$\frac{Fm^7}{B^{\flat}11}$	$\frac{Gm^7}{A^{11}}$	$\frac{Fm}{Fm (A^{\flat} \text{ bass})}$
----------------------------	--------------------------------	----------------------------	-----------------------	--

$\frac{E^{\flat}m}{E^{\flat}m (G^{\flat} \text{ bass})}$	$\frac{E^{\flat}m^{(7)}}{F^{11}}$	$\frac{C^{\sharp}m}{E^{\Delta(+5)}$	$C^{\sharp}m^6$	$\frac{Gm^7}{C^{11}}$	$\overset{\circ}{A^{11}}$:
--	-----------------------------------	-------------------------------------	-----------------	-----------------------	-----------------------------

rit.