

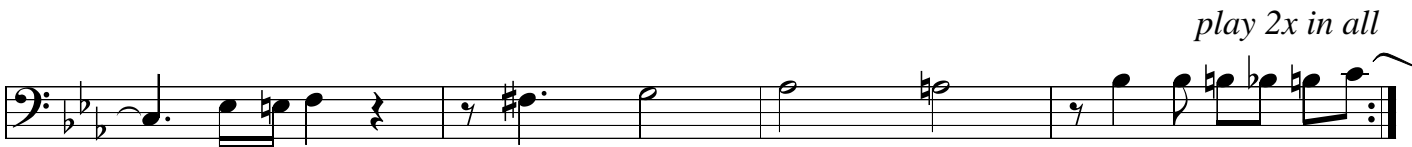
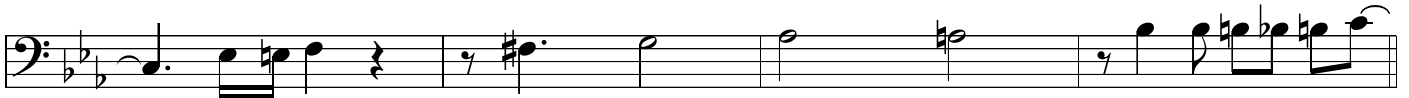
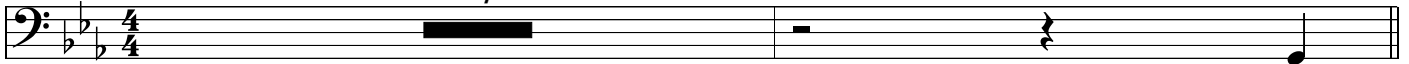
Bass

THE SYSTEM

Paul Busby
PRS

♩ = 184

7



play 2x in all

Bass solo first



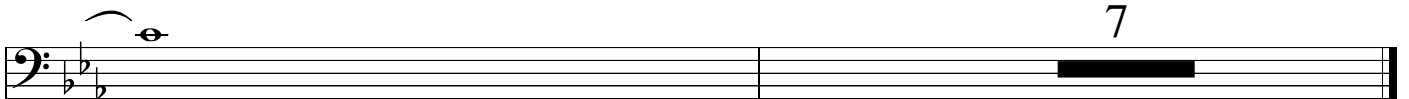
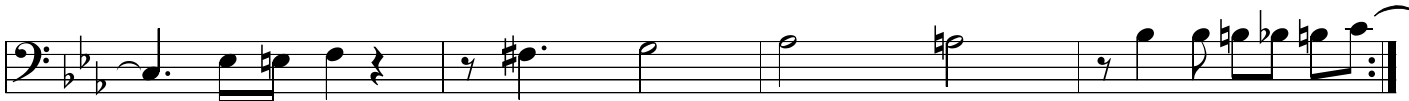
Cm blues



Drum solo



play 3x in all



THE SYSTEM

SWING
Paul Busby
PRS

Drums

♩ = 184

Play 8 **Play 8** **Play 8** **Play 8**

solos - bass first

your solo

indicate when ending

play 12
(blues) **play 12** **play 12**

tune again

Play 8 **Play 8** **Play 8**

play the tune, padded out - phrasing given

♩ ♩ ♩ ♩ ♩ ♩ ♩ ♩ ♩ ♩

♩ ♩ ♩ ♩ ♩ ♩ ♩ ♩ ♩ ♩

THE SYSTEM

Paul Busby
PRS

Piano

♩ = 184

Cm11 Fm7 | Cm11 | Bbm11 Bm11 | Cm11

Cm11 Fm7 | F#m7 Gm△ | Abm7 A7(#9) | Bb7sus4 B7sus4

bass solo

Cm blues

other solos
ends with drum solo

Cm blues

Cm11 Fm7 | Cm11 | Bbm11 Bm11 | Cm11

play 2x in all

Cm11 Fm7 | F#m7 Gm△ | Abm7 A7(#9) | Bb7sus4 B7sus4

Cm11

7

8

Trombone *solo*

THE SYSTEM

Paul Busby
PRS

$\text{♩} = 184$

4/4

play 4 times in all

bass solo first

after piano solo - swap phrases, then solo together, then drum solo

Cm blues

after drum solo

solo

play 3 times in all

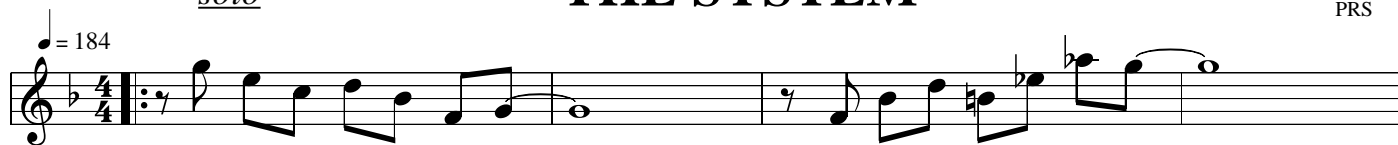
Tenor

solo

THE SYSTEM

Paul Busby
PRS

$\text{♩} = 184$



play 4 times in all



bass solo first

after piano solo - swap phrases, then solo together, then drum solo



after drum solo

solo



play 3 times in all



Trumpet,clarinet

THE SYSTEM

Paul Busby
PRS

♩ = 184

harmon (Trombone/Tenor lead)

open

Bass solo first after piano solo - swap phrases, then solo together, then drum solo

after drum solo

harmon (Trombone lead)