

Soprano/Trumpet

ALINA'S SONG

Straight 8's
Paul Busby
PRS

♩ = 100

soft rock feel

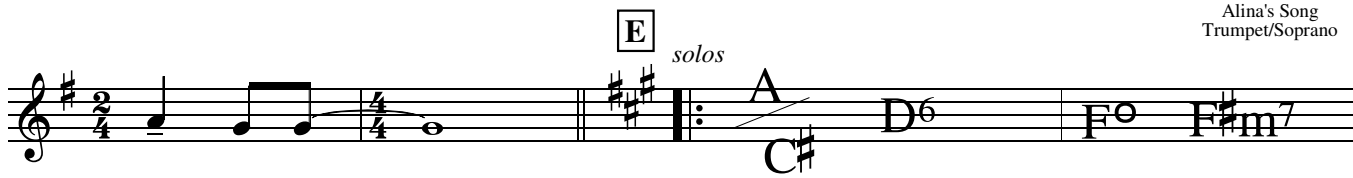
A

B

C

D

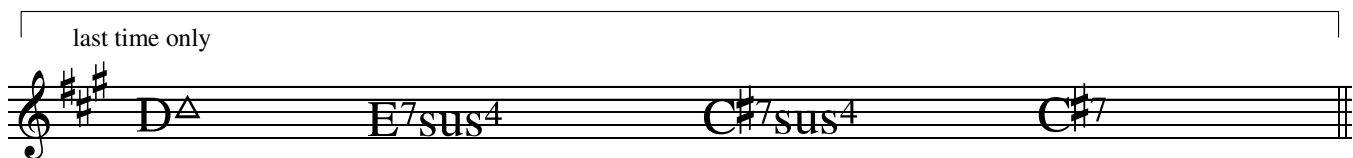
E *solos*



for repeats

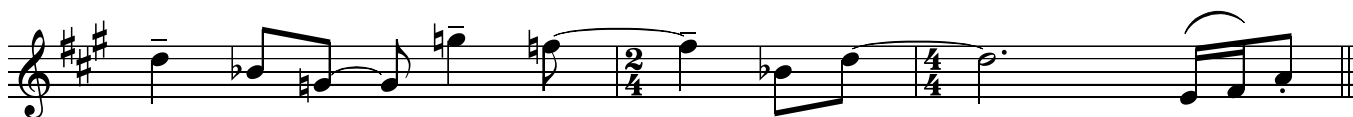


last time only

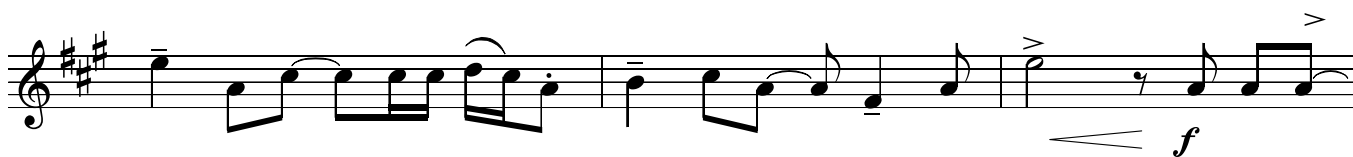
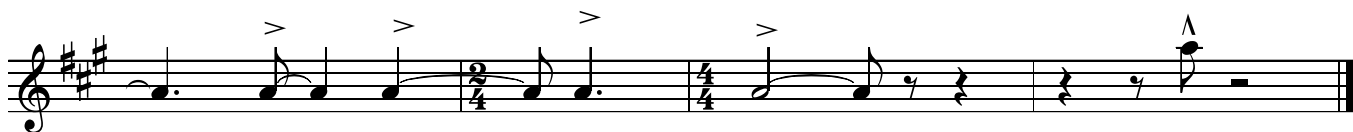


F after solos *mf*





G

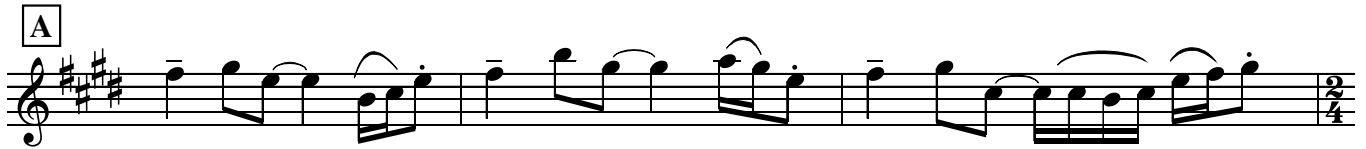
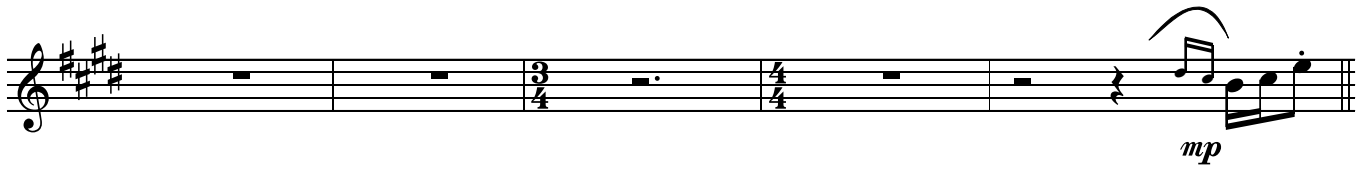
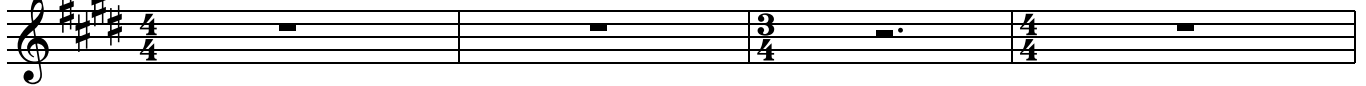
Alto

ALINA'S SONG

Straight 8's
Paul Busby
PRS

$\text{♩} = 100$

soft rock feel



E *solos*

Musical staff for section E solos. It begins with a treble clef, a key signature of three sharps (F#, C#, G#), and a 2/4 time signature. The first measure contains a half note G#4. The second measure contains a quarter note A5 and a quarter note G#4. The third measure contains a half note F#5. The fourth measure contains a half note E5. A double bar line with repeat dots follows. The staff then continues with a whole note chord G#4, a whole note chord A6, a whole note chord C°, and a whole note chord C#m7.

for repeats

Musical staff for repeats. It begins with a treble clef, a key signature of three sharps, and a 2/4 time signature. The first measure contains a whole note chord F#m7. The second measure contains a whole note chord G#m7. The third measure contains a whole note chord AΔ. The fourth measure contains a whole note chord B7sus4. The fifth measure contains a whole note chord E. The sixth measure contains a whole note chord F#m7. The staff ends with a double bar line and repeat dots.

last time only

Musical staff for last time only. It begins with a treble clef, a key signature of three sharps, and a 2/4 time signature. The first measure contains a whole note chord AΔ. The second measure contains a whole note chord B7sus4. The third measure contains a whole note chord G#7sus4. The fourth measure contains a whole note chord G#7. The staff ends with a double bar line.

F *after solos*

Musical staff for section F after solos. It begins with a treble clef, a key signature of three sharps, and a 2/4 time signature. The first measure contains a quarter rest followed by a quarter note G#4. The second measure contains a quarter note A5 and a quarter note G#4. The third measure contains a quarter note F#5 and a quarter note E5. The fourth measure contains a quarter note D#5 and a quarter note C#5. The fifth measure contains a quarter note B5 and a quarter note A5. The sixth measure contains a quarter note G#4 and a quarter note F#4. The seventh measure contains a quarter note E4 and a quarter note D#4. The eighth measure contains a quarter note C#4 and a quarter note B3. The staff ends with a double bar line. The dynamic marking *mf* is placed below the first measure.

Musical staff for section F after solos. It begins with a treble clef, a key signature of three sharps, and a 2/4 time signature. The first measure contains a quarter note G#4 and a quarter note A5. The second measure contains a quarter note F#5 and a quarter note E5. The third measure contains a quarter note D#5 and a quarter note C#5. The fourth measure contains a quarter note B5 and a quarter note A5. The fifth measure contains a quarter note G#4 and a quarter note F#4. The sixth measure contains a quarter note E4 and a quarter note D#4. The seventh measure contains a quarter note C#4 and a quarter note B3. The eighth measure contains a quarter note A3 and a quarter note G#3. The staff ends with a double bar line.

Musical staff for section F after solos. It begins with a treble clef, a key signature of three sharps, and a 2/4 time signature. The first measure contains a quarter note G#4 and a quarter note A5. The second measure contains a quarter note F#5 and a quarter note E5. The third measure contains a quarter note D#5 and a quarter note C#5. The fourth measure contains a quarter note B5 and a quarter note A5. The fifth measure contains a quarter note G#4 and a quarter note F#4. The sixth measure contains a quarter note E4 and a quarter note D#4. The seventh measure contains a quarter note C#4 and a quarter note B3. The eighth measure contains a quarter note A3 and a quarter note G#3. The staff ends with a double bar line.

G

Musical staff for section G. It begins with a treble clef, a key signature of three sharps, and a 2/4 time signature. The first measure contains a quarter note G#4 and a quarter note A5. The second measure contains a quarter note F#5 and a quarter note E5. The third measure contains a quarter note D#5 and a quarter note C#5. The fourth measure contains a quarter note B5 and a quarter note A5. The fifth measure contains a quarter note G#4 and a quarter note F#4. The sixth measure contains a quarter note E4 and a quarter note D#4. The seventh measure contains a quarter note C#4 and a quarter note B3. The eighth measure contains a quarter note A3 and a quarter note G#3. The staff ends with a double bar line.

Musical staff for section G. It begins with a treble clef, a key signature of three sharps, and a 2/4 time signature. The first measure contains a quarter note G#4 and a quarter note A5. The second measure contains a quarter note F#5 and a quarter note E5. The third measure contains a quarter note D#5 and a quarter note C#5. The fourth measure contains a quarter note B5 and a quarter note A5. The fifth measure contains a quarter note G#4 and a quarter note F#4. The sixth measure contains a quarter note E4 and a quarter note D#4. The seventh measure contains a quarter note C#4 and a quarter note B3. The eighth measure contains a quarter note A3 and a quarter note G#3. The staff ends with a double bar line. The dynamic marking *f* is placed below the seventh measure.

Musical staff for section G. It begins with a treble clef, a key signature of three sharps, and a 2/4 time signature. The first measure contains a quarter note G#4 and a quarter note A5. The second measure contains a quarter note F#5 and a quarter note E5. The third measure contains a quarter note D#5 and a quarter note C#5. The fourth measure contains a quarter note B5 and a quarter note A5. The fifth measure contains a quarter note G#4 and a quarter note F#4. The sixth measure contains a quarter note E4 and a quarter note D#4. The seventh measure contains a quarter note C#4 and a quarter note B3. The eighth measure contains a quarter note A3 and a quarter note G#3. The staff ends with a double bar line.

Electric piano *soft rock feel*

ALINA'S SONG

Straight 8s
Paul Busby
PRS

$\text{♩} = 100$

intro *mp*

G2 Am7/G

Am7 Bm7 Cmaj7 D7sus G2 Am7/G D7 G2

Am7/G Am7 Bm7 Cmaj7 C#o

D7sus D7 D7sus D7

tune starts

mp

A G/B Cmaj7 A/C# D#o Em7 F9 F#m7-5 B7+ C6 C#o

D7sus Am7-5/D G2

Am11 **B** Gmaj7/B Cmaj7 C#m7-5 D7sus

Musical notation for the first system, featuring piano accompaniment in G major. The system includes a 2/4 to 4/4 time signature change. Chords are indicated above the staff: D7sus, Am7-5/D, G2, Am11, Gmaj7/B, Cmaj7, C#m7-5, and D7sus.

D#o Em7 F9(+11) E7(#9+5) Am7 Bm7 C6 C#o D7sus C9 F#m7-5/B

Musical notation for the second system, continuing the piano accompaniment. It includes a 2/4 to 4/4 time signature change. Chords are indicated above the staff: D#o, Em7, F9(+11), E7(#9+5), Am7, Bm7, C6, C#o, D7sus, C9, and F#m7-5/B.

C
F

⌘

B7

Emaj9 Amaj7 G#7+5 C#m7 Amaj7 G#m7

Musical notation for the third system, featuring piano accompaniment in G major. A dynamic marking of *mf* is present. Chords are indicated above the staff: B7, Emaj9, Amaj7, G#7+5, C#m7, Amaj7, and G#m7.

F#m7 E/G# Amaj7 Bbo B7sus Am/B Emaj9

Musical notation for the fourth system, featuring piano accompaniment in G major. A key signature change to E major is indicated. Chords are indicated above the staff: F#m7, E/G#, Amaj7, Bbo, B7sus, Am/B, and Emaj9.

Bbm11 Eb13 Eb9 Gm7-5 Bbm7/C Fm7 Cbmaj7(+11)

Musical notation for the fifth system, featuring piano accompaniment in E major. Chords are indicated above the staff: Bbm11, Eb13, Eb9, Gm7-5, Bbm7/C, Fm7, and Cbmaj7(+11).

al Coda

Bbm9 Ab/C Dbmaj7 Do Eb7sus Db9 Gm7-5/C

D Fmaj7/A Bb Bo C#o Dm9 Gm7

mp

Am7 Bb Bo C7sus Bbm6 D9 Gm7 Am7 Bb Do

C7sus Gm7-5/C F2 Gm7 Am7

E solos

G B C6

E♭° Em7 Am7 Bm7

for repeats

last time only

C^Δ D7sus4 G Am7 : C^Δ D7sus4 B7sus4 B7

D.S. al Coda

CODA

Eb7sus D7sus D7

mf

G

Gmaj7/B Cmaj9 A7/C# Ebo Em9 Am7

Bm7 C2 C#o D7sus Cm/Eb E9 Am7

Bm7 C2 C#o D7sus C#m7-5 F#13 Bm7 add G

E13 Ebmaj7 Abmaj7 G G2

Electric piano
Full version

soft rock feel

ALINA'S SONG

Straight 8s
Paul Busby
PRS

♩ = 100

G2 Am7/G

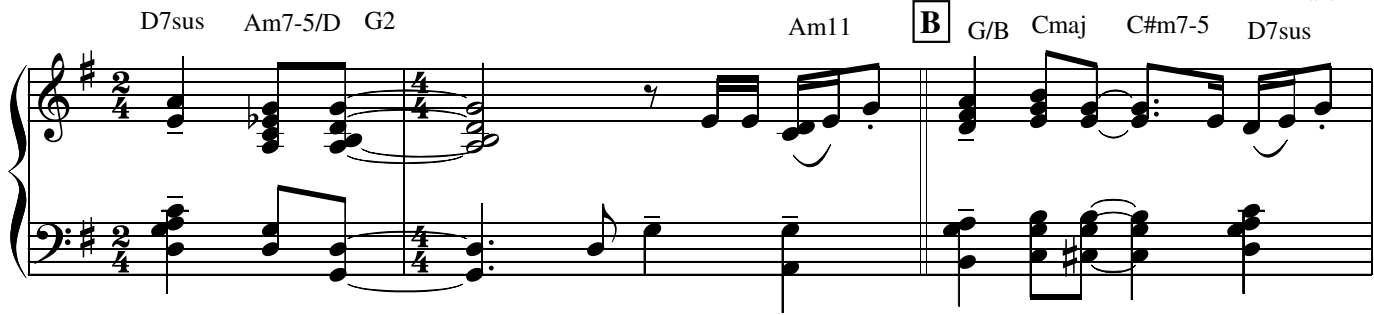
Am7 Bm7 Cmaj D7sus G2 Am7/G D7 G2

Am7/G Am7 Bm7 Cmaj C#o

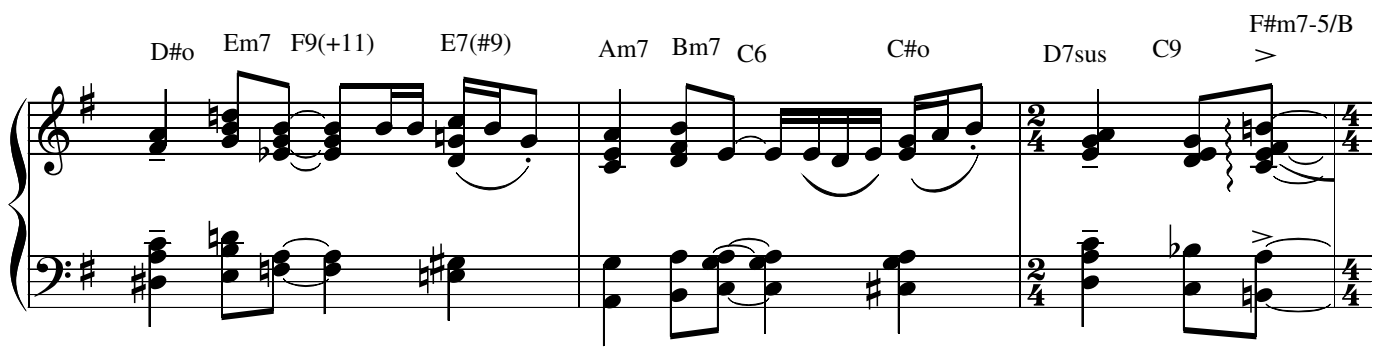
D7sus D7 D7sus D7 tune mp

A G/B Cmaj A/C# D#o Em7 F9 F#m7-5 B7+ C6 C#o

D7sus Am7-5/D G2 Am11 **B** G/B Cmaj C#m7-5 D7sus

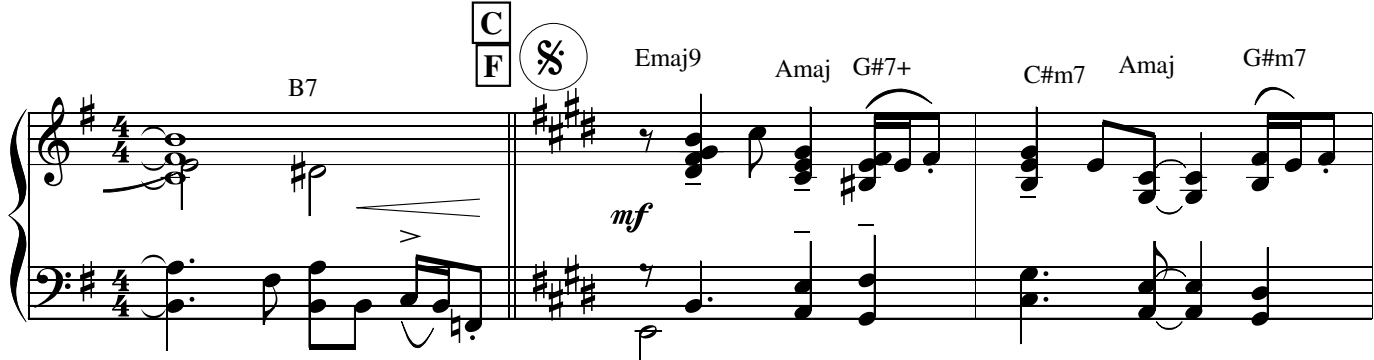


D#o Em7 F9(+11) E7(#9) Am7 Bm7 C6 C#o D7sus C9 F#m7-5/B

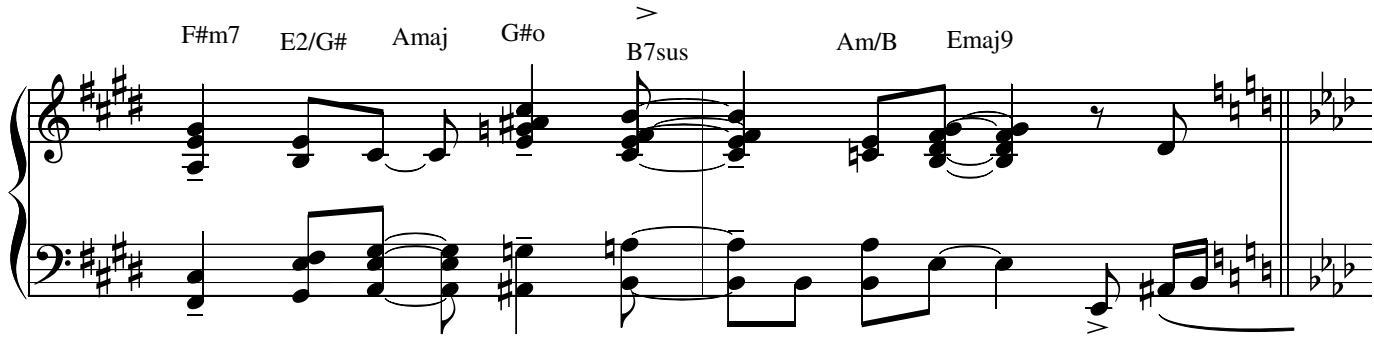


B7 **C** **F** $\text{\textcircled{S}}$ Emaj9 Amaj G#7+ C#m7 Amaj G#m7

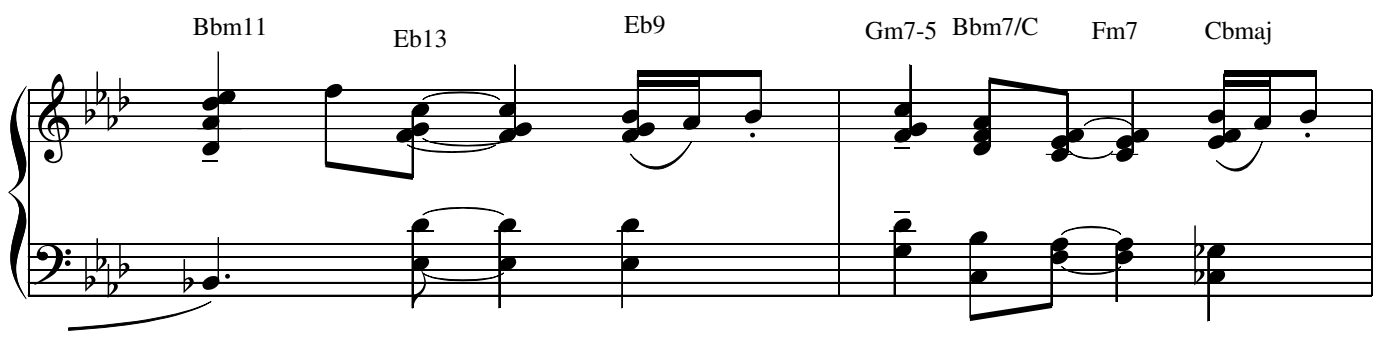
mf



F#m7 E2/G# Amaj G#o B7sus Am/B Emaj9



Bbm11 Eb13 Eb9 Gm7-5 Bbm7/C Fm7 Cbmaj



al Coda ⊕

Bbm9 Ab/C Dbmaj Do Eb7sus Db9 Gm7-5/C

D Fmaj/A Bb Bo C#o Dm9 Gm7

mp

Am7 Bb Bo C7sus Bbm6 D9 Gm7 Am7 Bb Do

C7sus Gm7-5/C F2 Gm7 Am7 **E** solos

G B C6

E♭° Em7 Am7 Bm7

for repeats last time only

C△ D7sus4 G Am7 :| C△ D7sus4 B7sus4 B7

D.S. al Coda

CODA

Eb7sus D7sus D7

mf

G Gmaj/B Cmaj9 C#o Ebo Em9 Am7

Bm7 C2 C#o D7sus Cm/Eb E9 Am7

Bm7 C2 C#o D7sus C#m7-5 F#13 Bm7 add G

E13 Ebmaj Abmaj G G2

ALINA'S SONG

Straight 8s
Paul Busby
PRS

♩ = 100
Bass

soft rock feel

The bass line for "Alina's Song" is written in bass clef with a key signature of one sharp (F#) and a 4/4 time signature. The tempo is marked as 100 beats per minute with a "soft rock feel". The piece consists of 12 measures, with some measures containing multiple time signatures (3/4 and 2/4). The bass line is accompanied by a series of guitar chords, many of which are marked with letter boxes (A, B, C, D) indicating specific fret positions. The chords include various 7th, 9th, and 11th chords, as well as triads and dyads. The bass line features a mix of eighth and quarter notes, with some measures containing rests or ties.

Chords: G, Am7/G, Am7 Bm7 C, D7sus, G, D7, G, Am7/G, Am7 Bm7 C, C#o, D7sus, D7, D7sus, D7, A G/B, C, A7/C# D#o Em, F7, F#m7-5 B7, C, C#o, D7sus, G, Am7, B G/B, C C#m7-5 D7sus D#o Em7 F7, E7, Am7Bm7, C, C#o, D7sus, C7, B7sus, B7sus(b9), B7(b9), C E, A, G#7, C#m7, A, G#m7, F#m7 G#m7, A, A#o, B7sus, E, Bbm7, Eb7, Eb7(b9), Gm7-5C7, Fm7, B7, Bbm7, Cm7, Db, Do, Eb7sus, Db7, C7sus(b9), C7sus(b9), D F/A, Bb, G/B, C#o, Dm7, Gm7, Am7, Bb, Bo, C7sus, C#6, D7, Gm7, Am7, Bb, Bo, C7sus, C7sus(b9), F, Gm7, Am7.

E

solos G

B C Eb^o Em⁷ Am⁷ Bm⁷

for repeats

last time only

C D^{7sus4} G Am⁷ C D^{7sus4} B^{7sus4} B⁷

F

E A G#7 C#m7 A G#m7 F#m7 G#m7 A A#o B7sus

B7sus E Bbm7 Eb7 Eb7(b9)Gm7-5C7 Fm7 B7

Bbm7 Cm7 Db Do Eb7sus D7sus D7

G

G/B C A/C# D#m7 Em7Am7 Bm7 C C#o D7 D#7 E7 Am7

Bm7 C C#o D7sus C#m7-5 F#7 Bm7 E7

Eb Ab G G

Drums

ALINA'S SONG

Straight 8s
Paul Busby
PRS

fill

♩ = 100 *soft rock feel (play 8 on cymbal/HH)*

fill

A

fill

B

fill

C

fill

D

fill

fill

E

solos

repeat as required

F

play 4

fill

First staff of music: Bass clef, 4/4 time signature. The melody consists of quarter notes and eighth notes. A dynamic accent (>) is placed over the second eighth note of the final measure. The staff ends with a double bar line.

G

Second staff of music: Bass clef, 4/4 time signature. The melody continues with quarter notes and eighth notes. A dotted quarter note is present in the final measure.

Third staff of music: Bass clef, 4/4 time signature. The melody continues with quarter notes and eighth notes. A dynamic accent (>) is placed over the second eighth note of the final measure. The word "fill" is written above the staff. The staff ends with a double bar line.

Fourth staff of music: Bass clef, 4/4 time signature. The melody continues with quarter notes and eighth notes. A dynamic accent (>) is placed over the first eighth note of the final measure. The word "fill" is written above the staff. The staff ends with a double bar line.