

♩ = 220  
Trumpet/Soprano/Clarinet

# KEY FOR TWO

JAZZ WALTZ  
Paul Busby  
PRS

8 *q*

1st time only

*Av(+5)* for 8 bars || *Gv(+5)* for 8 bars || *Fv(+5)* for 4 bars

*Ebv(+5)* for 4 bars || *Dv(+5)* || *Cv(+5)* || *Bmv* || *Bbv(+5)*

*A6(+11)* || */* || *Am7* || */* || *:*

CODA

DS al  $\Phi$

♩ = 220

# KEY FOR TWO

JAZZ WALTZ  
Paul Busby  
PRS

Alto lead

*q*

8

Ev(+5) for 8 bars

1st time only

Dv(+5) for 8 bars    Cv(+5) for 4 bars    Bbv(+5) for 4 bars

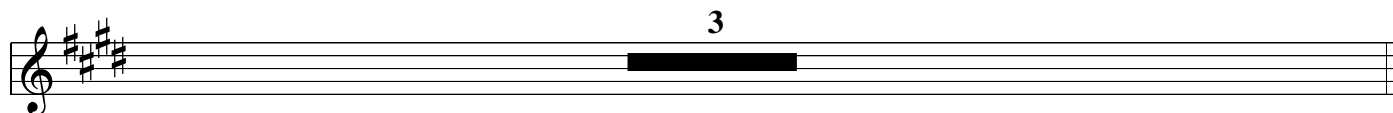
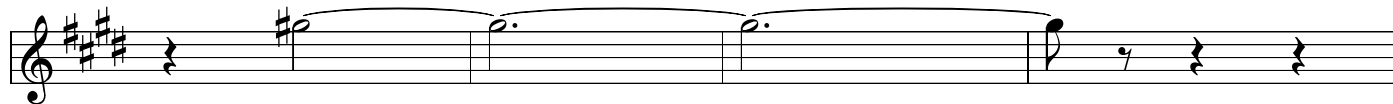
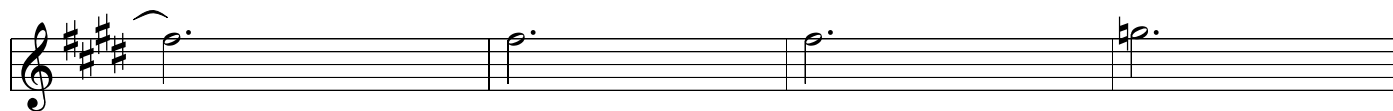
Av(+5)    Gv(+5)    Fxmv    Fv(+5)

E6(+11)    /:    Em7    /:    :

DS al ⊕

CODA

Key for two  
Alto lead



♩ = 220

# KEY FOR TWO

JAZZ WALTZ  
Paul Busby  
PRS

Concert lead

8 q

Gv(+5) for 8 bars

1st time only

Fv(+5) for 8 bars    Eb(+5) for 4 bars    Dbv(+5) for 4 bars

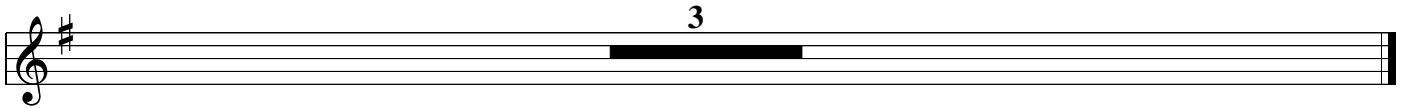
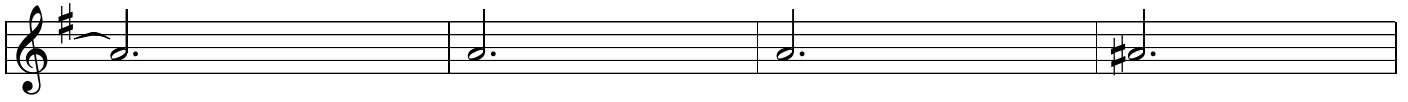
Cv(+5)    Bbv(+5)    Amv    Abv(+5)

G6(+11)    /:    Gm7    /:    :

DS al  $\oplus$

CODA

Key for two  
Concert lead



# KEY FOR TWO

JAZZ WALTZ  
Paul Busby  
PRS

$\text{♩} = 220$   
Trombone harmony  
8

*q*

8

Gv(+5) for 8 bars

*1st time only*

Fv(+5) for 8 bars    Ebv(+5) for 4 bars    Dbv(+5) for 4 bars

Cv(+5)    Bbv(+5)    Amv    Abv(+5)

G6(+11)    %    Gm7    %    :

CODA

DS al  $\oplus$

3







GV(+5) for 8 bars

( $\frac{A}{G6}$ )

DS al  $\phi$

CODA

Key for two  
piano p.3

The first system of the coda consists of four measures. The treble clef part begins with a half note chord of G4 and B4, followed by a half note chord of G4 and A4. The bass clef part begins with a half note chord of G3 and B2, followed by a half note chord of G3 and A2. The key signature is one sharp (F#).

The second system of the coda consists of four measures. The treble clef part features a half note chord of G4 and B4, followed by a half note chord of G4 and A4, and then a half note chord of G4 and A4. The bass clef part features a half note chord of G3 and B2, followed by a half note chord of G3 and A2, and then a half note chord of G3 and A2. The key signature is one sharp (F#).

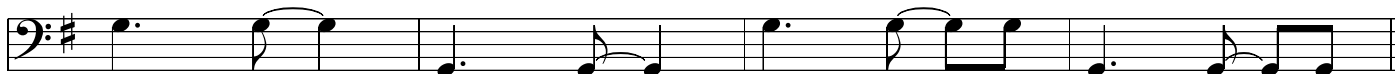
The third system of the coda consists of four measures. The treble clef part features a half note chord of G4 and B4, followed by a half note chord of G4 and A4, and then a half note chord of G4 and A4. The bass clef part features a half note chord of G3 and B2, followed by a half note chord of G3 and A2, and then a half note chord of G3 and A2. The key signature is one sharp (F#).

Bass

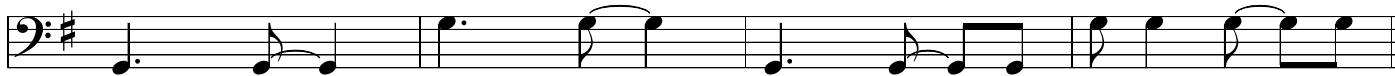
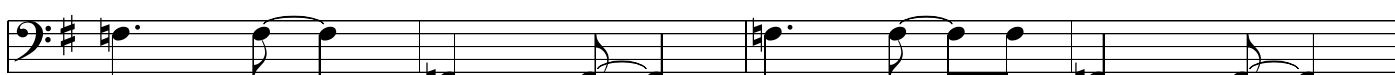
KEY FOR TWO

JAZZ WALTZ  
Paul Busby  
PRS

♩ = 220



q



Q





**SCALE**  
**CHORD**

**KEY FOR TWO**

**Concert Pitch**

||:  $\frac{Em}{Gv(+5)}$  for 8 bars |

|  $\frac{Dm}{Fv(+5)}$  for 8 bars ||

|  $\frac{Cm}{Ebv(+5)}$  for 4 bars |  $\frac{Bbm}{Dbv(+5)}$  for 4 bars ||

|  $\frac{Am}{Cv(+5)}$  |  $\frac{Gm}{Bbv(+5)}$  |  $\frac{Am}{Amv}$  |  $\frac{Eb}{Abv}$  |

|  $\frac{D}{G69(+11)}$  for 2 bars |  $\frac{F}{Gm7}$  for 2 bars :||

**note: G69(+11) = A triad over G6**

**SCALE**  
**CHORD**

**KEY FOR TWO**

**Bb Pitch**

$\parallel$ :  $\frac{Fxm}{Av(+5)}$  for 8 bars

|  $\frac{Em}{Gv(+5)}$  for 8 bars  $\parallel$

|  $\frac{Dm}{Fv(+5)}$  for 4 bars |  $\frac{Cm}{Ebv(+5)}$  for 4 bars  $\parallel$

|  $\frac{Bm}{Dv(+5)}$  |  $\frac{Am}{Cv(+5)}$  |  $\frac{Bm}{Bmv}$  |  $\frac{F}{Bbv}$  |

|  $\frac{E}{A69(+11)}$  for 2 bars |  $\frac{G}{Am7}$  for 2 bars  $\parallel$

**note: A69(+11) = B triad over A6**

**SCALE**  
**CHORD**

**KEY FOR TWO**

**Eb Pitch**

$\begin{array}{c} \text{Cxm} \\ \hline \text{Ev(+5)} \end{array}$  for 8 bars

$\begin{array}{c} \text{Bm} \\ \hline \text{Dv(+5)} \end{array}$  for 8 bars

$\begin{array}{c} \text{Am} \\ \hline \text{Cv(+5)} \end{array}$  for 4 bars       $\begin{array}{c} \text{Gm} \\ \hline \text{Bbv(+5)} \end{array}$  for 4 bars

$\begin{array}{c} \text{Fxm} \\ \hline \text{Av(+5)} \end{array}$        $\begin{array}{c} \text{Em} \\ \hline \text{Gv(+5)} \end{array}$        $\begin{array}{c} \text{Fxm} \\ \hline \text{Fxm v} \end{array}$        $\begin{array}{c} \text{C} \\ \hline \text{Fv} \end{array}$

$\begin{array}{c} \text{B} \\ \hline \text{E69(+11)} \end{array}$  for 2 bars       $\begin{array}{c} \text{D} \\ \hline \text{Em7} \end{array}$  for 2 bars

**note: E69(+11) = F# triad over E6**