

WALKING WITH BLUEBELLS

Straight 8s
Paul Busby
PRS

♩ = 120

Piano (Rhodes)

play tune along with front-line

$B\flat\Delta$ $F7sus4$ $B\flat\Delta$ $F7sus4$ $B\flat\Delta$ E° add $F\#$ A D

$B\flat\Delta$ $F7sus4$ $B\flat\Delta$ $F7sus4$ $B\flat\Delta$ $E\flat m69$

$D7\#9-5$ A°/D $D7\#9-5$ A°/D $D7\#9-5$ $D\flat\Delta+5$ add G

$Cm11$ $D\flat\Delta/C$ $Cm11$ $D\flat\Delta/C$ $Cm11$ $C\flat\Delta/69$ *fine*

solos

$B\flat\Delta/F$ $F7sus4$ E° bar line

$B\flat\Delta/F$ $F7sus4$ $E\flat m6$ bar line

$D7alt$ A°/D $D\flat\Delta+5$ bar line *Bbm scale*

$Cm7$ $D\flat\Delta/C$ $B\Delta$ bar line

D.C. al Fine

♩ = 120

WALKING WITH BLUEBELLS

Straight 8s
Paul Busby
PRS

Trumpet/Tenor

Four staves of music in 4/4 time. The melody begins with a double bar line and a repeat sign. It consists of eighth and quarter notes, with a long note on the fourth staff. The piece concludes with a double bar line and the word *fine*.

solos

Chord solo notation on a single staff. The first measure contains a C major triad over a G bass note (C^Δ/_G). The second measure is G7sus4. The third measure is F#o. The fourth measure is a double bar line with a slash.

Chord solo notation on a single staff. The first measure contains a C major triad over a G bass note (C^Δ/_G). The second measure is G7sus4. The third measure is Fm6. The fourth measure is a double bar line with a slash.

Chord solo notation on a single staff. The first measure is E7alt. The second measure is Bø over E. The third measure is EbΔ+5. The fourth measure is a double bar line with a slash. The text *Cm scale* is written above the staff.

Chord solo notation on a single staff. The first measure is Dm7. The second measure is EbΔ over D. The third measure is C#Δ. The fourth measure is a double bar line with a slash and repeat sign.

D.C. al Fine

♩ = 120

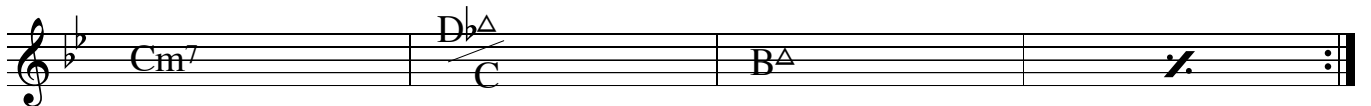
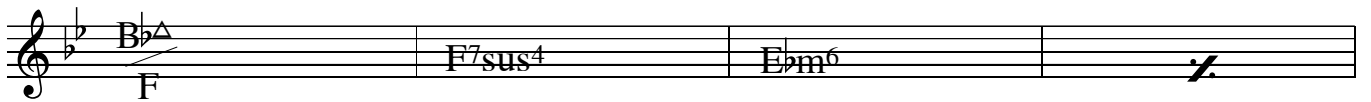
WALKING WITH BLUEBELLS

Straight 8s
Paul Busby
PRS

Flute/Guitar/Vibes



solos



D.C. al Fine

Trombone

WALKING WITH BLUEBELLS

Straight 8s
Paul Busby
PRS

♩ = 120

First staff of music in bass clef, 4/4 time, key of B-flat major. It begins with a double bar line and a repeat sign. The melody consists of eighth and quarter notes, with a long slur over the final two measures.

Second staff of music, continuing the melody from the first staff.

Third staff of music, continuing the melody.

Fourth staff of music, ending with a double bar line and the word "fine" written above.

solos

First solo staff in bass clef, 4/4 time. It contains four measures of chords: BbΔ/F, F7sus4, E°, and a double bar line with a slash.

Second solo staff in bass clef, 4/4 time. It contains four measures of chords: BbΔ/F, F7sus4, Ebm6, and a double bar line with a slash.

Bbm scale

Staff for the Bbm scale in bass clef, 4/4 time. It contains four measures of chords: D7alt, A∅/D, DbΔ+5, and a double bar line with a slash.

Final solo staff in bass clef, 4/4 time. It contains four measures of chords: Cm7, DbΔ/C, BΔ, and a double bar line with a slash and repeat sign.

D.C. al Fine

♩ = 120
Bass

WALKING WITH BLUEBELLS

Straight 8s
Paul Busby
PRS

$\frac{B\flat}{F}$ F7sus4 E° fill

$\frac{B\flat}{F}$ F7sus4 E°m fill

D7alt $\frac{A^\emptyset}{D}$ D°m+ fill

Cm7 $\frac{D\flat^\Delta}{C}$ B fill fine

solos

$\frac{B\flat}{F}$ F7sus4 E°

$\frac{B\flat}{F}$ F7sus4 E°m

Bbm scale

D7alt $\frac{A^\emptyset}{D}$ D°m+

Cm7 $\frac{D\flat^\Delta}{C}$ B

D.C. al Fine

Drums

WALKING WITH BLUEBELLS

Straight 8s
Paul Busby
PRS

♩ = 120

light broken-up feel

fill with bass

First staff of drum notation in 4/4 time. The notation shows a walking bass line with eighth notes and quarter notes. The first two measures contain eighth notes, the next two contain quarter notes, and the final two measures are filled with diagonal lines representing a bass drum fill.

Second staff of drum notation, continuing the walking bass line pattern with eighth and quarter notes, ending with a fill of diagonal lines.

Third staff of drum notation, continuing the walking bass line pattern with eighth and quarter notes, ending with a fill of diagonal lines.

Fourth staff of drum notation, concluding the piece with a fine marking. The notation shows the walking bass line pattern ending with a final fill of diagonal lines.

D.C. al Fine